

**TEUPEN**<sup>®</sup>  
...access redefined

**AERIAL  
TITANS**

866-874-0584  
WWW.AERIALTITANS.COM

**<< go back**

## TL63A

Platform Height:  
62 ft 10 in (19.15 m)

Lateral Reach:  
39 ft 4 in (12 m)

Machine Width:  
3 ft 3 in (0.98 m)

Machine Height:  
6 ft 6 in (1.99 m)

Machine Weight:  
6,570 lbs (2,980 kg)

- Compact design, travels through a double door
- Light, low surface load for use on sensitive flooring
- Smooth, proportional electro-hydraulic controls
- Reliable and comprehensive safety control system
- Articulated design with two independently operable telescopic booms
- Onboard diagnostics
- Setup on slopes up to 30%
- Dual power for operating indoor and outdoor



**Now available with Lithium Ion Batteries!**

**TEUPEN**<sup>®</sup>

**<< go back**

**AERIAL  
TITANS**

866-874-0584  
WWW.AERIALTITANS.COM



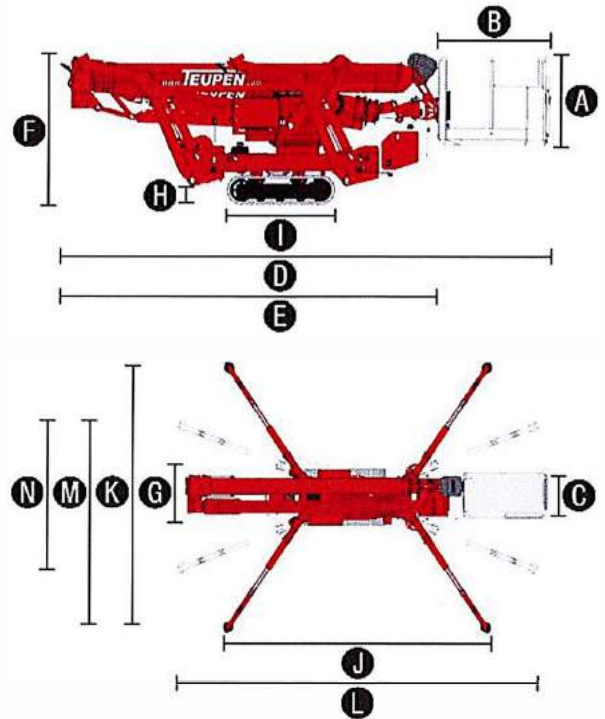
## Specifications

MEASUREMENTS	US	Metric
Platform height, max.	62 ft 10 in	19,15 m
Horizontal outreach with S51 lbs	39 ft 4 in	12,00 m
Up-and-over clearance, max.	30 ft 10 in	9,40m
Platform height {A}	3 ft 7 in	1,10m
Platform length (BJ)	4 ft 8 in	1,42m
Platform width (C)	2 ft 4 in	0,77
Length, overall (D)	20 ft 12 in	6,40m
Length without basket (E)	16 ft 5 in	5,00m
Height, travelling position {F}	6 ft 6 in	1,99m
Width, min. (G)	3 ft 3 in	0,98m
Ground clearance, max. (HI)	1 ft 5 in	0,44 m
Track (L x W) {I}	4 ft 9 in x 8 in	1,45 m x 0,20 m
Length outrigger footprint standard (J)	15 ft 5 in	4,70m
Width outrigger footprint standard (K)	15 ft 5 in	4,70m
Length footprint one side narrow (L)	20 ft 8 in	6,30m
Width footprint one side narrow (M)	12 ft	3,60m
Width footprint both sides narrow (NJ)	8 ft 2 in	2,50m
Outrigger plate {I}	7in	0,18m

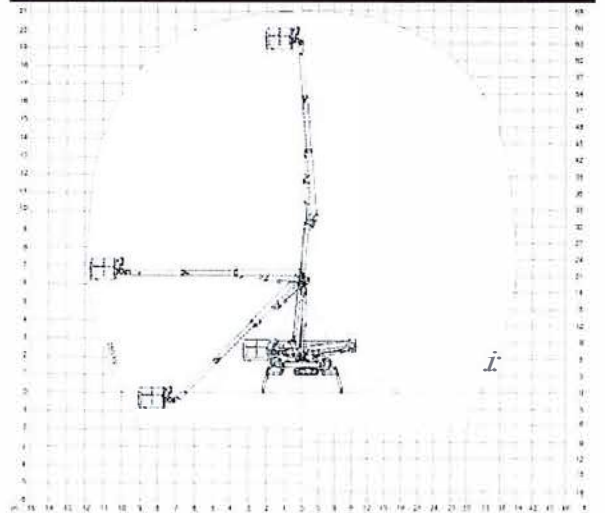
PRODUCTIVITY	US	Metric
Basket capacity	551 lbs	250 kg
Movable Jib	-	-
Basket rotation	150°	180°
Turret rotation	450°	450°
Stabilization, maximum ground slope	16.7°/30.0 %	16,7°/30,0 %
Height and width track adjustment	7 in/1 ft 6 in	19/46cm
Gradeability, max.	16.7°/30.0%	16,7°/30,0 %
Slope angle	19,0°/34,0 %	19,0°/34,0 %
Travel speed	2.5 mph	4,0 km/h

WEIGHT	US	Metric
Total weight	6,570 lbs	2,980 kg
Live load in travelling position	94.0 psf	4,50 kN/m²
Live load in working position	32.8 psf	1,57 kN/m²

POWER		
Standard power sources	<ol style="list-style-type: none"> <li>1) Electric: 115 V, 19.3 A, 1.6 kW</li> <li>2) Diesel: Kubota Z 602 (10.8 kW/14.5 hp)</li> <li>3) Lithium Ion: 48V / 120Ah (Option)</li> </ol>	
Fuel tank capacity Diesel engine	2.91 gal	11,51



### WORKING ENVELOPE



### STANDARDS COMPLIANCE



Product specifications are subject to change without notice or obligation. Photographs and drawings in this document are for illustrative purposes only. Refer to the appropriate Operator's Manual for instructions on the proper use of this equipment. Failure to follow the appropriate Operator's Manual when using our equipment or to otherwise act irresponsibly may result in serious injury or death. The only warranty applicable to our equipment is the standard written warranty applicable to the particular product and sale and we make no other warranty, expressed or implied. Products and services listed may be trademarks, service marks or trade-names of Teupen Maschinenbau GmbH and/or its subsidiaries in the USA and many other countries. "Teupen", "Access redefined" and "LEO Series" are registered Trademarks of Teupen GmbH in the United States of America and many other countries. Version 2014-A © 2014 Teupen Maschinenbau GmbH.