

TEUPEN[®]
...access redefined

TL35A-G

Platform Height:
35 ft 5 in (10.8 m)

Lateral Reach:
19 ft 10 in (6.05 m)

Machine Width:
2 ft 7 in (0.78 m)

Machine Height:
6 ft 6 in (1.99 m)

Machine Weight:
3,219 lbs (1,460 kg)

- Compact design, travels through a single door
- Light, low surface load for use on sensitive flooring
- Smooth, proportional electro-hydraulic controls
- Reliable and comprehensive safety control system
- Full height and outreach with 441 lbs basket load
- Automatic, self leveling outriggers
- Operates on 115V / 20amp electric power

**AERIAL
TITANS**

866-874-0584
WWW.AERIALTITANS.COM

<< go back



TEUPEN[®]

**AERIAL
TITANS**

866-874-0584
WWW.AERIALTITANS.COM

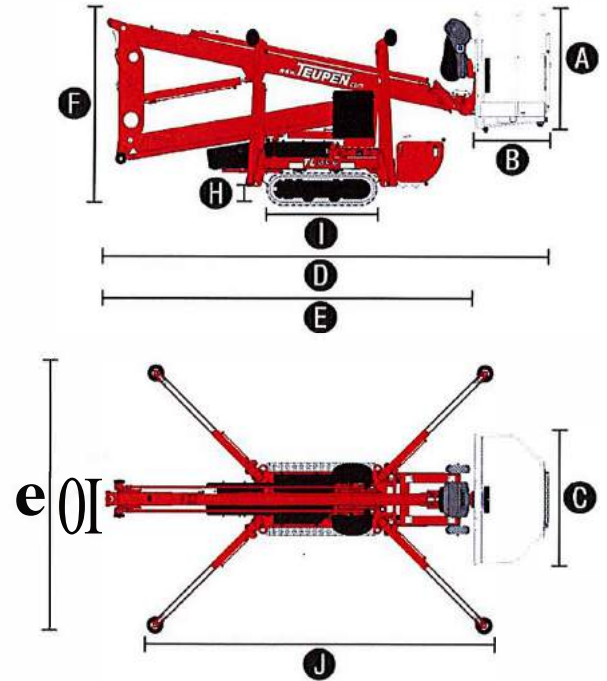
Specifications

MEASUREMENTS	US	Metric
Platform height, max.	35 ft 5 in	10,80 m
Horizontal outreach, max.	19 ft 10 in	6,05m
Up-and-over clearance, max.	15 ft 1 in	4,60m
Platform height (A)	3 ft 7 in	1,10m
Platform length (B)	2 ft 4 in	0,70m
Platform width (C)	4 ft 7 in	1,40 m
Length, overall (D)	15 ft 7 in	4,75 m
Length without basket (E)	13 ft 1 in	4,00m
Height, travelling position (F)	6 ft 6 in	1,99 m
Width, min. (G)	2 ft 7 in	0,78 m
Ground clearance, max. (H)	1 ft 3 1/2 in	0,40m
Track (L X W) (I)	3 ft 10 in x 7 in	118 x 18 cm
Length stabilizer footprint, max. (J)	12 ft 1 in	3,69m
Width stabilizer footprint, max. (K)	9 ft 5 in	2,86m
Stabiliser pads (L)	7 in	0,18 m

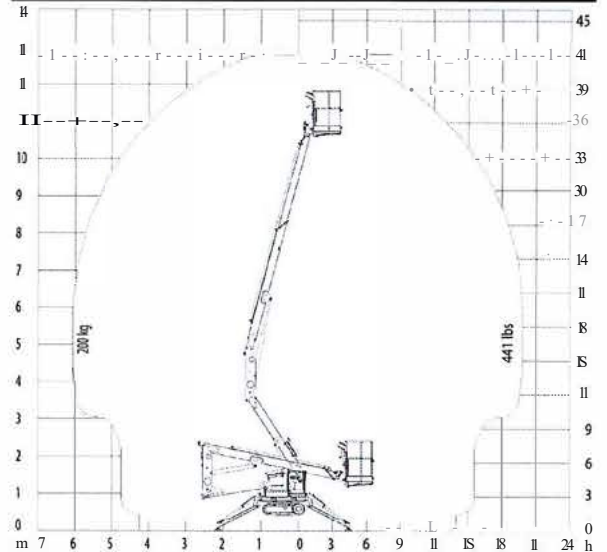
PRODUCTIVITY	US	Metric
Basket capacity	441 lbs	200 kg
Movable jib	-	-
Turret rotation	355°	355°
Stabilization, maximum ground slope	10'/17.5 %	10'/17,5 %
Height and width track adjustment	-	-
Gradeability, max.	14.4'/25.5 %	14,4'/25,5 %
Slope angle	14.4'/25.5 %	14,4'/25,5 %
Travel speed	0.6 mph	1,0 km/h

WEIGHT	US	Metric
Total weight	3,219 lbs	1.460 kg
Live load in travelling position	43.8 psf	2,1 kN/m ²
Live load in working position	35.5 psf	1,7 kN/m ²

POWER		
Standard power sources	1) Electric: 115 V, 19.3 A, 1.6 kW 2) Petrol/Gas: Robin-Subaru-EX21 (3.7 kW/5 hp)	
Fuel tank capacity petrol/gas engine	0.95 gal	3,61



WORKING ENVELOPE



STANDARDS COMPLIANCE

EN ISO 9001

ANSI/SIA A92.5-2006 section 4 & CSA B354.1-2004
design & manufacture criteria

Product specifications are subject to change without notice or obligation. Photographs and drawings in this document are for illustrative purposes only. Refer to the appropriate Operator's Manual for Instructions on the proper use of this equipment. Failure to follow the appropriate Operator's Manual when using our equipment or to otherwise act irresponsibly may result in serious injury or death. The only warranty applicable to our equipment is the standard written warranty applicable to the particular product and sale and we make no other warranty, expressed or implied. Products and services listed may be trademarks, service marks or trade-names or Teupen Maschinenbau GmbH and/or its subsidiaries in the U.S.A. and many other countries. "Teupen", "Access redefined" and "LEO Series" are registered Trademarks of Teupen GmbH in the United States of America and many other countries. Version 2014-A O 2014 Teupen Maschinenbau GmbH.