

<< go back

## Specifications

# TL156A

**IEUPEN**  
...access redefined

11

### PERFORMANCE

Working height, max.	164 ft
Platform height, max.	157 ft 5 in
Working height, 882 lbs platform capacity	-
Platform height 882 lbs platform capacity	-
Horizontal outreach, max. (882 lbs)	-
Horizontal outreach, max. (441 lbs)	56 ft 1 in
Horizontal outreach, max. (176 lbs)	56 ft 7 in
Up and over clearance, max.	86 ft 11 in
Platform capacity, max.	441 lbs
Jib, movable	-
Platform, rotatable	180°
Turntable rotation, max.	450°
To be jacked up on ground slope of	16,7° / 30,0 %
Track drive, height- and width-adjustable	1 ft 7 in / 1 ft
Gradeability, max.	16,7° / 30,0 ob
Slope angle, max.	16,7° / 30,0 ob
Travel speed, max.	1.0 mph

### MEASUREMENTS\*

Platform (height) (A)	3 ft 7 in
Platform (length) (B)	5 ft 11 in
Platform (width) (C)	2 ft 7 in
Length (D)	30 ft 8 in
Length without platform (E)	27 ft 8 in
Height (F)	6 ft 5 in
Width, min. (G)	5 ft 2 in
Ground clearance, max. (H)	1 ft 10 in
Track (length x width) (I)	9 ft 10 in x 1 ft 3 in
Stabilizer footprint both side wide (length) (J)	24 ft 11 in
Stabilizer footprint both side wide (width) (K)	16 ft 6 in
Stabilizer footprint one side narrow (length) (L)	32 ft 1 in
Stabilizer footprint one side narrow (width) (M)	13 ft 9 in
Stabilizer plate (length x width)	1 ft 10 in x 10 in

### WEIGHT\*

Total weight	29762 lbs
Live load in travelling position	102,3 psf
Live load in working position	81,4 psf
Point load per outrigger plate, max.	18,209 lbf

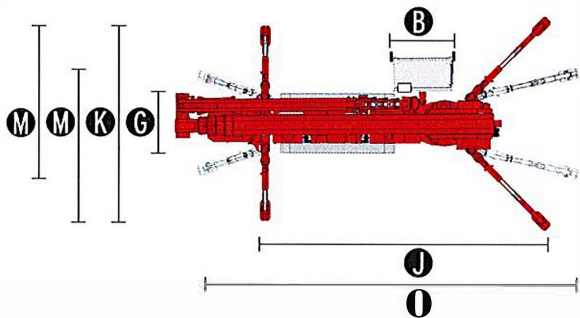
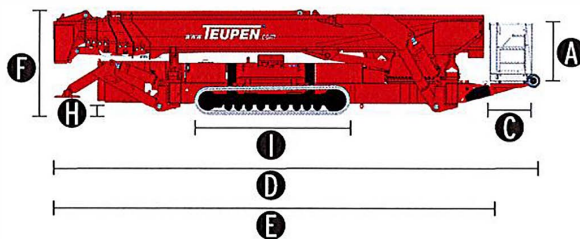
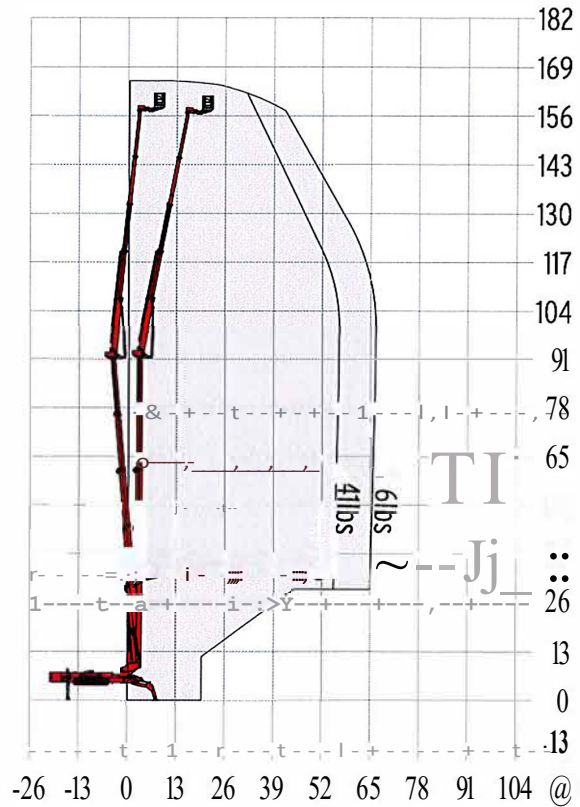
### POWER SOURCES

Standard power sources:

2 Electric motor	(400 V, 15,7 A, 7,5 kW)
1 Combustion engine (Diesel)	Kubota V2203-M (35,9 kW/ 48,1 hp)
fuel tank capacity (Diesel engine)	21,1 gal

### POWER SUPPLY

Electric current, max.	400-460 V / 32 A
------------------------	------------------



\* The technical data may deviate +/- 3% from the specified values.  
\* Weight and dimensions may vary depending on options and accessories.

STANDARDS  
EN ISO 9001

ANSI/SIA A92.5:2006  
section 4 & CSA  
8354.1-2004  
\*Quon, m a u f ch u l t e r n i t e l \*

<< go back

&lt;&lt; go back

# Features

# TL156A

**IEUPEN**  
...access redefined

simon 77

**CHASSIS**

- ti Powerful track drive with hydraulic braking system  
Precise manoeuvring via sensitive remote control  
White, non-marking rubber tracks with specially arranged profile for optimal grip
- ti Hydraulically height- and width-adjustable crawler track drive

**STABILIZATION**

- a Electrohydraulic stabilizers with automatic levelling and ground pressure sensor system
- ti Variable stabilization system with one side narrow setup option

**BOOM SYSTEM**

- ti Telescopic lower and upper boom
- a Boom system made of steel/aluminium boom tubes
- a Height cut-off for boom system, 2 set points  
- First set point fixed at 147 ft 7 in, second is selectable
- ti All functions available via radio remote control
- n Stepless, electrical proportional control system with intuitive operation
- ti Robust, lockable control panel
- D Parallel guided platform with electro hydraulic levelling
- ti 180° platform rotation for additional flexibility
- D Turntable rotation via high-performance slewing ring, worm gear and hydraulic motor
- ti Platform changing system

**POWER SOURCE**

- n Electric motor (400 V, 15.7 A, 7.5 kW)
- ti Diesel engine Kubota V2203-M (35,9 kW/ 48,1 hp)
- o Start-stop device for combustion engine in the platform

**PRODUCTIVITY, SAFETY, QUALITY**

- ti Hydraulic emergency lowering via electric pump
- D Power socket in the platform (115 V / 13 A)
- fi Detachable platform, attachment points for safety harnesses and tool tray
- o Drive operation without platform possible
- ti Lockable storage box
- ti Protected, internal power track for platform control
- ti Hydraulic system filled with biodegradable hydraulic oil
- n High-quality paint in RAL 3020 (red)  
- Hydraulic cylinders in RAL 9006 (grey)
- a Unlockable check valves located directly on hydraulic cylinders
- ti Hydraulic system protected by pressure relief valves
- u Hydraulic tank, emergency control. connecting cables and hoses are mounted protected
- ti Cable remote control as complete control panel for bottom connection, including storage box
- ti Hour meter
- ti Fuzzy control technology

**OPTIONS\***

- u Custom paintwork, one colour, according to RAL scheme  
- (except metallic coatings, signal- or special colours)
- a Custom paintwork, two colours, according to RAL scheme  
- (except metallic coatings, signal- or special colours)
- n Platform including load limit device (47.3" x 31.5")  
- Only in combination with platform support
- ti Detachable platform support for platform (47.3" x 31.5")

**ACCESSORIES\***

- ti Safety harness
- ti 4 sliding pads (43" x 15.4" x 1.6")
- u Storage frame for sliding pads, lockable
- ti Track mat (78.8" x 31.5" x 0.6")
- ti Platform including load limit device and platform support (70.9" x 31.5")

&lt;&lt; go back

**CONTACT****HUPEN USA**

10701 Southern Loop Blvd.  
Charlotte (Pinneville), NC 28134  
USA

Phone (704) 248-9888  
Fax (704) 248-9889

E-mail [infousa@teupen.com](mailto:infousa@teupen.com)

\* Weight and dimensions may vary depending on options and accessories.

Product specifications are subject to change without notice or obligation. Photographs and drawings in this document are for illustrative purposes only. Refer to the appropriate Operator's Manual for instructions on the proper use of this equipment. Failure to follow the appropriate Operator's Manual when using our equipment or to otherwise act irresponsibly may result in serious injury or death. The only warranty applicable to our equipment is the standard written warranty applicable to the particular product and sale and we make no other warranty, expressed or implied. Products and services listed may be trademarks, service marks or trade names of IEUPEN Maschinenbau GmbH and/or its subsidiaries in the USA and many other countries. "IEUPEN", "Access redefined" and "LEO Series" are registered trademarks of Teupen GmbH in the United States of America and many other countries. ©2018 IEUPEN Maschinenbau GmbH

**m**

1019-A\_en\_US