

Specifications

PERFORMANCE

Working height, max. (662 lbs/ 882 lbs)	114 ft 9 in/ 104 ft 1 in
Working height, max. (both sides narrow)	98 ft 5 in
Platform height (661 lbs/ 882 lbs)	108 ft/ 3 in/ ft 98 ft 5
Platform height, max. (both side narrow)	91 ft 10 in
Horizontal outreach, max. (882 lbs)	42 ft 7 in
Horizontal outreach, max. (661 lbs)	45 ft 11 in
Horizontal outreach, max. (176 lbs)	55 ft 9 in
Horizontal outreach, max. (both sides narrow)	47 ft 6 in
Platform capacity, max.	882 lbs
Platform capacity, max. (both sides narrow)	551 lbs
Jib, movable	180 °
Platform, rotatable	180 °
Turntable rotation, max.	450 °
To be jacked up on ground slope of	16.7 °/30.0 %
Track drive, height- and width-adjustable	9 / 8 in
Gradeability, max.	16.7 °/30.0 %
Slope angle, max.	21.0 ° / 38.0 %
Travel speed, max.	1.85 mph

MEASUREMENTS*

Platform (height) (A)	3 ft 7 in
Platform (length) (B)	3 ft 11 in
Platform (width) (C)	2 ft 7 in
Length (D)	26 ft 2 in
Length without platform (E)	25 ft / 7 in
Height (f)	6 ft 6 in
Width, min. (G)	5 ft 2 in
Ground clearance, max. (H)	1 ft 4 in
Track (length x width) (I)	6 ft 3 in x 9 in
Stabilizer footprint both side wide (length) (J)	18 ft 4 in
Stabilizer footprint both side wide (width) (K)	18 ft 4 in
Stabilizer footprint one side narrow (length) (L)	24 ft 9 in
Stabilizer footprint one side narrow (width) (M)	14 ft 1 in
Stabilizer footprint both sides narrow (width) (N)	9 ft 9 in
Stabilizer plate (length x width)	1 ft 1 X 8 in

WEIGHT*

Total weight	119051bs
Live load in travelling position	4.30 kN/m
Live load in working position	2.10 kN/m
Point load per outrigger plate, max.	32.00 kN

POWER SOURCES

Standard power sources:

ⓘ Electric motor	(230 V, 12.9 A, 2.2 kW)
Ⓜ Combustion engine (Diesel)	Kubota D902 (16.1 kW/ 21.6 hp)

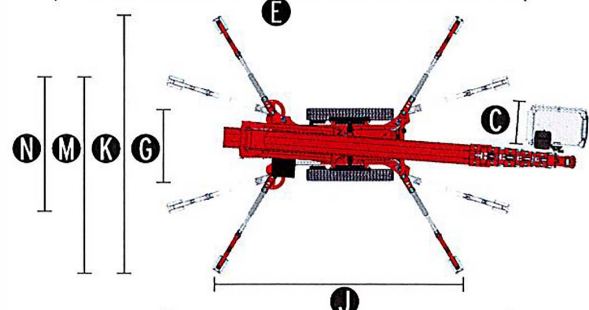
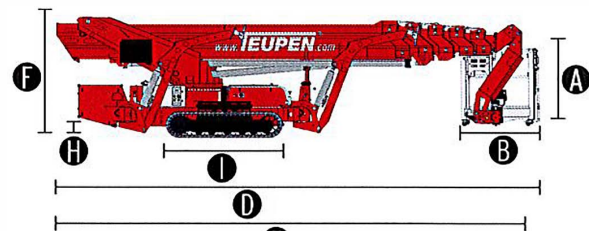
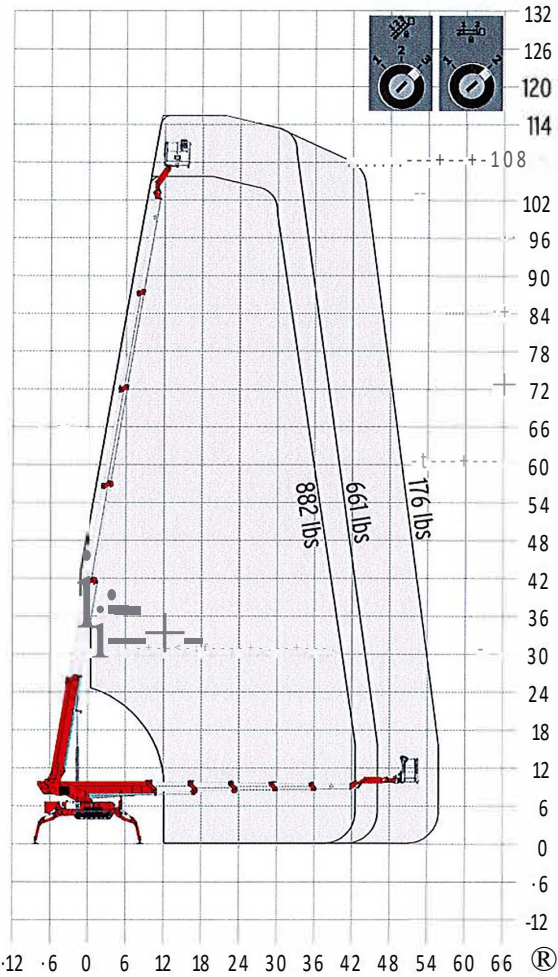
Optional power source:

Ⓝ Battery drive (RFB)	80 V
Fuel tank capacity (Diesel engine)	10.30 gal

POWER SUPPLY

Electric current, max.	115 V / 20 A
------------------------	--------------

*The technical data may deviate +/- 3% from the specified values.
• Weight and dimensions may vary depending on options and accessories.



STANDARDS
(1) EN ISO 9001

ANSI/SIA A92.5-2006
section 4 & CSA
8354.1-2004
S Teupen, manufacturer

Features

LEO 108S J plus

IEUPEN
... access redefined

77

CHASSIS

- a Powerful track drive with hydraulic braking system
- Precise manoeuvring via sensitive remote control
- a White, non-marking rubber tracks with specially arranged profile for optimal grip
- 11 Hydraulically height- and width-adjustable crawler track drive

STABILIZATION

- E Electrohydraulic stabilizers with automatic levelling and ground pressure sensor system
- 11 Variable stabilization system with one side or both sides narrow setup option
- n stabilizer pads, steel

BOOM SYSTEM

- 11 Boom system made of steel/aluminium boom tubes
- ii All functions available via radio remote control
- D Stepless, electrical proportional control system with intuitive operation
- 11 Robust, lockable control panel
- 11 Parallel guided platform with electro hydraulic levelling
- iii 180° platform rotation for additional flexibility
- u Turntable rotation via high-performance slewing ring and hydraulic motor
- a Platform changing system
- n Coming home and memory function can be stored for any point on the work diagram and the point can be accessed once more at the touch of a button
- 11 Radio control with display, two-line
- a Height cut-off for boom system, 2 set points
- 11 Horizontal outreach, selectable
- D Switching, platform capacity (661 lbs/ 882 lbs)

POWER SOURCE

- 11 Electric motor (230 V, 129 A, 2.2 kW)
- D Diesel engine Kubota 0902 (161 kW/ 21.6 hp)
- o Start-stop device for combustion engine via radio control

PRODUCTIVITY, SAFETY, QUALITY

- J Hydraulic emergency lowering via electric pump
- Additional hydraulic drive for boom recovery via platform control
- Power socket in the platform (115 V / 13 A)
- o 2 LED headlights (drive unit)
- ri Detachable platform, attachment points for safety harnesses and tool tray
- n Drive operation without platform possible
- J Lockable storage box
- Protected, internal power track for platform control
- Hydraulic system filled with biodegradable hydraulic oil
- High-quality paint in RAL 3020 (red)
 - Hydraulic cylinders in RAL 9006 (grey)
- ., Unlockable check valves located directly on hydraulic cylinders
- J Hydraulic system protected by pressure relief valves
- Hydraulic tank, emergency control, connecting cables and hoses are mounted protected

• Weight and dimensions may vary depending on options and accessories.

Product specifications are subject to change without notice or obligation. Photographs and drawings in this document are for illustrative purposes only. Refer to the appropriate Operator's Manual for instructions on the proper use of this equipment. Failure to follow the appropriate Operator's Manual when using our equipment or to otherwise act irresponsibly may result in serious injury or death. The only warranty applicable to our equipment is the standard written warranty applicable to the particular product and site and we make no other warranty, expressed or implied. Products and services listed may be trademarks, service marks or trade names of IEUPEN Maschinenbau GmbH and/or its subsidiaries in the USA and many other countries. "IEUPEN", "Access redefined" and "LEO Series" are registered trademarks of Teupen GmbH in the United States of America and many other countries. © 2018 IEUPEN Maschinenbau GmbH

PRODUCTIVITY, SAFETY, QUALITY

- 11 Hour meter
- n Fuzzy control technology

OPTIONS*

- Battery drive (RFB) 80 V including charging device
- 11 Custom paintwork, one colour, according to RAL scheme
 - (except metallic coatings, signal- or special colours)
- n Custom paintwork, two colours, according to RAL scheme
 - (except metallic coatings, signal- or special colours)
- m Water and air connection, platform

ACCESSORIES*

- 11 Safety harness
- a Track mat (78.8" x 31.5" x 0.6")
- E 4 sliding pads (33.5" x 13.4" x 3.0")
- 11 Storage frame for sliding pads, lockable
- 11 Snap hook, boom tubes
- 11 2 protective track covers made of high-quality polypropylene fabric
- 11 TOP level 1
- n Additional display in the control box
- n Tree package, including
 - Cover (hydraulic tank, fuel tank, control box)
 - 4 covers, piston rod (stabilizer)
- n Lighting package:
 - 8 flashlights (stabilizers)
 - 3 flashlights (turntable)
- 41 1 LED headlight (platform)
- Platform including platform support (35.5" x 31.5")
- 1 Platform including platform support (59.1" x 31.5")
- Platform including platform support (78.74" x 31.5")
- ., Lifting device (992 lbs capacity)
 - Only in combination with additional display in the control box
- Copper strips, pivot point
- Platform ladder monitoring system with boom function cut-off

<< go back

AERIAL TITANS 866-874-0584
WWW.AERIALTITANS.COM

CONTACT

HUPEN North America
10701 Southern Loop Blvd. Phone (704) 248-9888
Charlotte (Pineville), NC 28134 Fax (704) 248-9889
USA E-mail info@teupen-usa.com

m

10H_en_US

www.1EliPEii.com