



Self-Propelled Articulating Booms

Z™ -34/22 DC

Specifications

Models	Z-34/22 DC	
Measurements	US	Metric
Working height maximum*	40 ft 6 in	12.52 m
Platform height maximum	34 ft 6 in	10.52 m
Horizontal reach maximum	22 ft 3 in	6.78 m
Up and over clearance maximum	15 ft	4.57 m
▲ Platform length	2 ft 6 in	0.76 m
▲ Platform width	4 ft 8 in	1.42 m
▲ C Height - stowed	6 ft 7 in	2.00 m
▲ D Length - stowed	18 ft 6 in	5.64 m
▲ E Storage height	7 ft 5 in	2.26 m
▲ Storage length	13 ft 5 in	4.08 m
▲ Width	5 ft 8 in	1.73 m
▲ Wheelbase	6 ft 2 in	1.88 m
▲ Ground clearance - center	6 in	0.15 m

Productivity

Lift capacity	500 lb	227 kg
Platform rotation	180°	
Vertical jib rotation	139°	
Turntable rotation	355° non-continuous	
Turntable tailswing	zero	
Drive speed - stowed	4.0 mph	6.4 km/h
Drive speed - raised**	.68 mph	1.1 km/h
Gradeability - stowed***	30%	
Tilt sensor activation	front to back: 4.5° and side to side: 4.5°	
Turning radius - inside	5 ft 9 in	1.75 m
Turning radius - outside	13 ft 1 in	4 m
Controls	24V DC proportional / 2 speed	
Tires - air filled	9 x 14.5 in	

Power

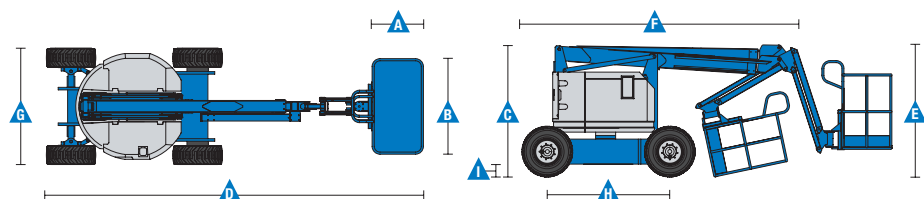
Power Source	48V DC (eight 6 V batteries 315 Ah capacity)	
Auxiliary Power Unit	24V DC	
Hydraulic Tank Capacity	4 gal	15.1 L
Fuel Tank Capacity	_____	_____

Weight****

	11,420 lb	5,180 kg
--	-----------	----------

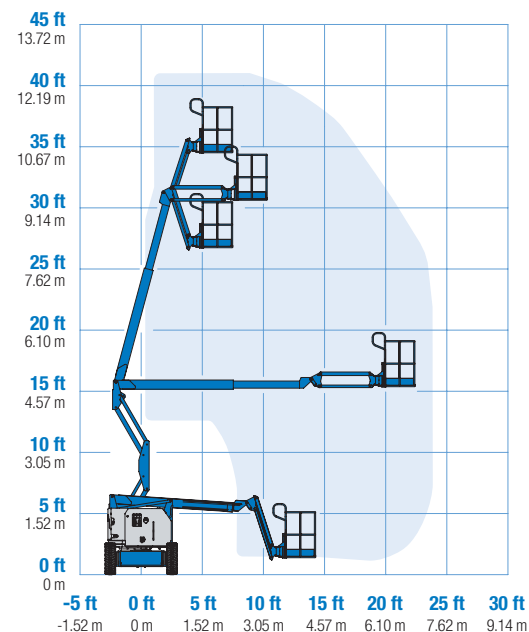
Standards Compliance

ANSI A92.20, CSA B354.6, EN 280, AS 1418.10



* The metric equivalent of working height adds 2 m to platform height. U.S. adds 6 ft to platform height.
 ** In lift mode *(platform raised), the machine is designed to operate on firm, level surfaces only.
 *** Gradeability applies to driving on slopes. See operator's manual for details regarding slope ratings.
 **** Weight will vary depending on options and/or country standards.

Range Of Motion Z-34/22 DC



AERIAL TITANS

866-874-0584

WWW.AERIALTITANS.COM



Self-Propelled Articulating Booms

Z™ -34/22 DC

Features

Standard Features

Measurements

- 40 ft 6 in (12.52 m) working height
- 22 ft 3 in (6.78 m) horizontal reach
- 15 ft (4.57 m) up and over clearance
- Up to 500 lb (227 kg) lift capacity

Productivity

- 4 ft (1.22 m) jib boom with 139° working range
- Self-leveling platform
- Hydraulic platform rotation
- Proportional joystick controls
- Thumb rocker steer
- Drive enable
- AC power to platform
- Alarm package: flashing beacon and travel alarm
- Horn
- Hour meter
- Tilt alarm
- Descent alarm
- Zero tailswing
- 355° non-continuous turntable rotation
- Lift Guard™ Contact Alarm
- Dual parallelogram for vertical wall tracking
- Lift Connect™ Telematics
- Platform load sense

Power

- 48V deep cycle battery pack
- 24V DC auxiliary power
- Universal 30A battery smart charger

Easily Configured To Meet Your Needs

Platform Options

- Steel 4 ft 8 in (1.42 m) with sliding mid-rail (standard)
- Steel 3 ft 10 in (1.17 m) with sliding mid-rail

Jib

- 4 ft (1.22 m) jib boom

Power

- 48V DC power source

Drive

- 2WD

Tire Options

- Industrial foam-filled (standard)
- Industrial non-marking foam-filled

Options & Accessories

Productivity Options

- Platform swing gate
- Lift Guard Platform Mesh - Half
- Lift Guard Platform Mesh - Full
- Platform top auxiliary rail**
- Air line to platform
- Specialty hydraulic oil (Cold weather, fire resistant or biodegradable)
- Aircraft protection package*
- Hostile environment kit
- Light package
- Florescent tube caddy***
- Pipe cradle (pair)***

Power Options

- AGM batteries
- EE UL583 Fire Protection rating
- Battery charge indicator (BCI)
- Low voltage interrupt with BCI
- 800 watt 120 V AC power inverter



* Derates load capacity to 440lb. Not available with other platform options.

** Not available with swing gate or half height mesh

*** Available through aftermarket parts only

Genie United States

6464 185th Ave. NE
 Redmond, WA 98052
 Telephone +1 (425) 881-1800
 Toll Free in USA/Canada +1 (800)-536-1800
 Fax +1 (425) 883-3475

Distributed By:

Effective Date: January, 2020. Product specifications and prices are subject to change without notice or obligation. The photographs and/or drawings in this document are for illustrative purposes only. Refer to the appropriate Operator's Manual for instructions on the proper use of this equipment. Failure to follow the appropriate Operator's Manual when using our equipment or to otherwise act irresponsibly may result in serious injury or death. The only warranty applicable to our equipment is the standard written warranty applicable to the particular product and sale and we make no other warranty, express or implied. Products and services listed may be trademarks, service marks or trade names of Terex Corporation and/or their subsidiaries in the USA and many other countries. Terex, Genie and AWP are registered trademarks of Terex Corporation or its subsidiaries. © 2020 Terex Corporation.