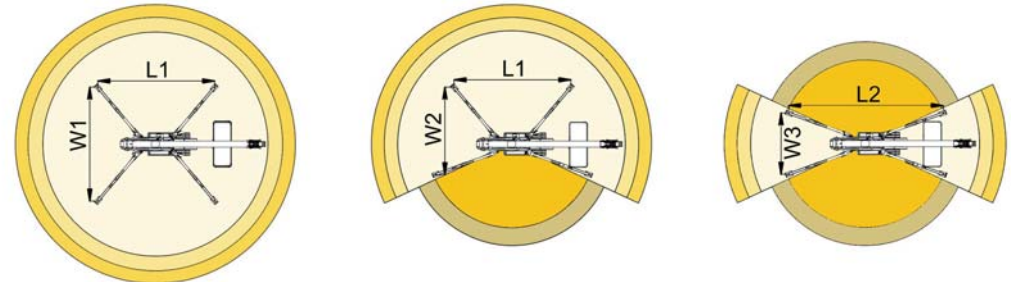
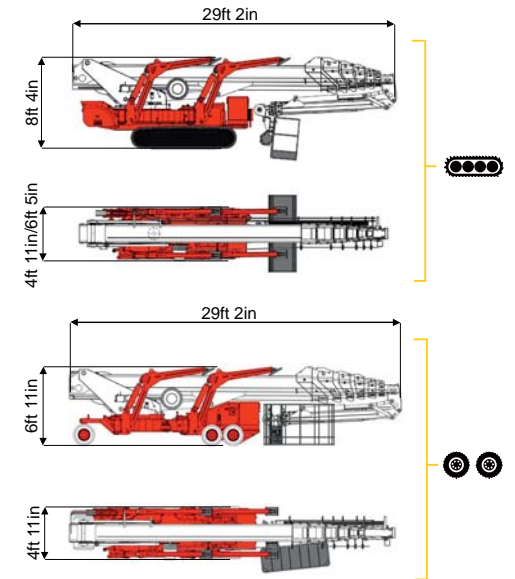
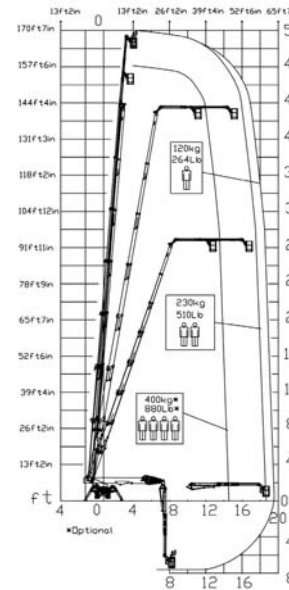


<< go back



170ft 7in ↑  
63ft 1in →  
880 lb\* 🧑🧑🧑



55ft 1in	60ft 8in	63ft 12in	48ft 7in	54ft 2in	L1	L2	W1	W2	W3
880 lb*	510 lb	264 lb	880 lb*	264/510 lb	21ft 2in	23ft 7in	16ft 12in	15ft 3in	13ft 7in

BI-ENERGY  
Diesel+AC



XTJ 170+/C	🔋	170ft 7in	63ft 1in	880 lb*	170°	660°	7ft 10inx2ft 4in	90°+80°	13ft 7in-16ft 12in	16%	42%	0,62 mph	30864 lb	17983 lb	87,51 psf	137 psf
XTJ 170+/R	⊙ ⊙	170ft 7in	63ft 1in	880 lb*	170°	660°	7ft 10inx2ft 4in	90°+80°	13ft 7in-16ft 12in	16%	21%	0,62 mph	28660 lb	17983 lb	81,24 psf	127,19 psf

Available version:

BI-ENERGY (DIESEL+AC)  
ECO (DC+AC)  
HYBRID (DIESEL+DC)

**AERIAL TITANS**  
866-874-0584  
WWW.AERIALTITANS.COM



COMPANY WITH  
QUALITY SYSTEM  
CERTIFIED BY DNV GL  
= ISO 9001 =

Palazzani Industrie S.p.A.  
Via del Pavione, 4 - 25050 - Paderno F.C. (BS) - Italy  
Tel. (+39) 0306857073  
platforms@palazzani.it  
www.palazzani.it

Characteristics and technical data are informative only and subjected to change without notice.

NC 670 A 19