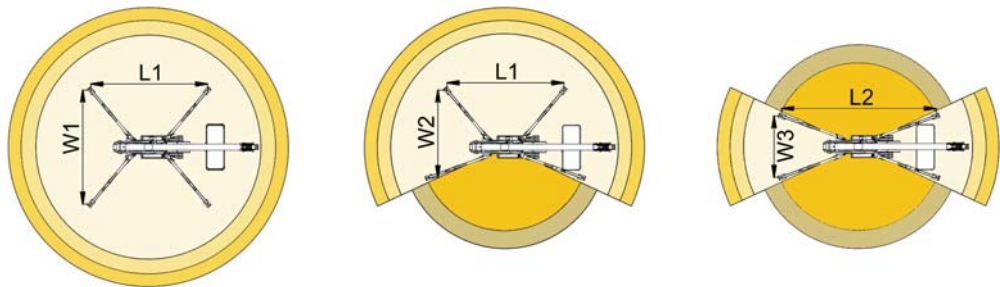
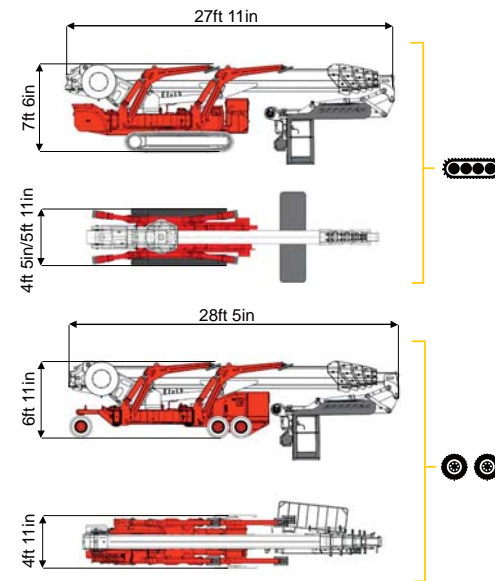
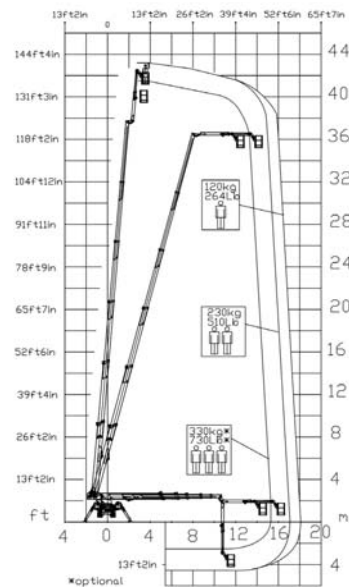


<< go back



141ft 1in ↑
59ft 1in →
730 lb* 👤👤👤



50ft 2in	55ft 10in	59ft 1in	38ft 9in	44ft 3in	L1	L2	W1	W2	W3
730 lb*	510 lb	264 lb	730 lb*	264/510 lb	19ft 6in	23ft 3in	17ft 2in	14ft 7in	11ft 11in

BI-ENERGY
Diesel+AC



XTJ 140+/C	🔋	141ft 1in	59ft 1in	730 lb*	170°	660°	7ft 10inx2ft 4in	90°+80°	11ft 11in-17ft 2in	23%	38%	1,20 mph	24030 lb	16858 lb	73,31 psf	111,32 psf
XTJ 140+/R	⊙ ⊙	141ft 1in	59ft 1in	730 lb*	170°	660°	7ft 10inx2ft 4in	90°+80°	11ft 11in-17ft 2in	23%	16%	0,62 mph	24030 lb	16858 lb	73,31 psf	109,65 psf

Available version:

- BI-ENERGY (DIESEL+AC)
- ECO (DC+AC)
- HYBRID (DIESEL+DC)

AERIAL TITANS
866-874-0584
WWW.AERIALTITANS.COM



COMPANY WITH
QUALITY SYSTEM
CERTIFIED BY DNV GL
= ISO 9001 =

Palazzani Industrie S.p.A.
Via del Pavione, 4 - 25050 - Paderno F.C. (BS) - Italy
Tel. (+39) 0306857073
platforms@palazzani.it
www.palazzani.it

Characteristics and technical data are informative only and subjected to change without notice.