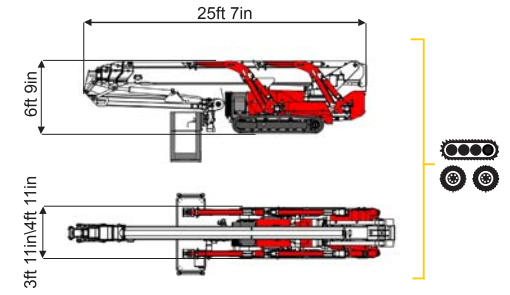
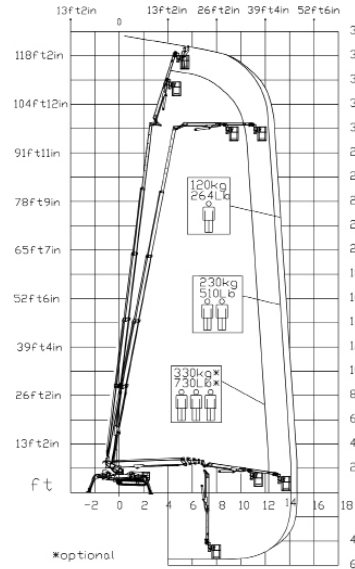


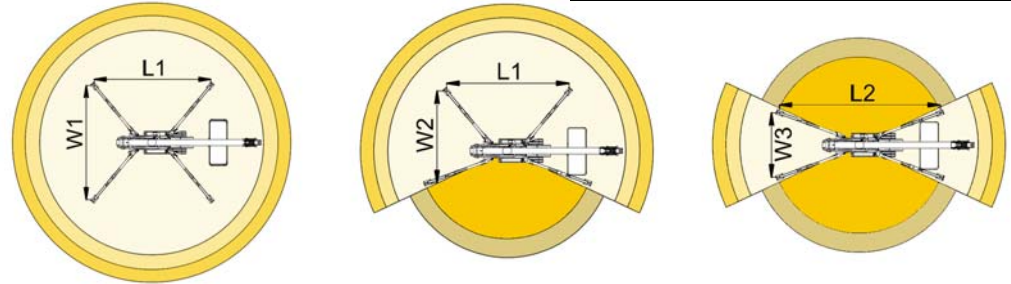
<< go back



**121ft 5in** ↑  
**47ft 7in** →  
**730 lb\*** 👤👤👤



**AERIAL  
TITANS**  
866-874-0584  
WWW.AERIALTITANS.COM



44ft 3in	45ft 11in	47ft 7in	25ft 3in	31ft 2in	L1	L2	W1	W2	W3
730 lb*	510 lb	264 lb	730 lb*	264/510 lb	17ft 9in	23ft 6in	17ft 3in	13ft	8ft 9in

**BI-ENERGY**  
Diesel+AC



**XTJ 121+/C-R** 121ft 5in 47ft 7in 730 lb\* 170° 660° 5ft 11inx2ft 4in 90°+80° 8ft 10in-17ft 4in 23% 36% 1,24 mph 16534 lb 12363 lb 55,14 psf 111,53 psf

Available version:

- BI-ENERGY (DIESEL+AC)
- ECO (DC+AC)
- HYBRID (DIESEL+DC)

Characteristics and technical data are informative only and subjected to change without notice.

