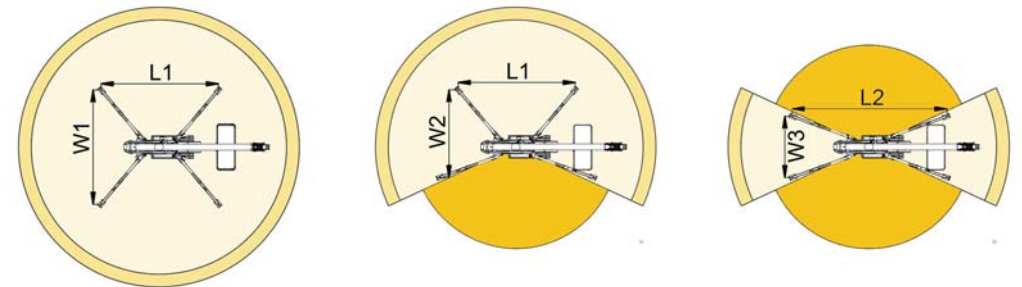
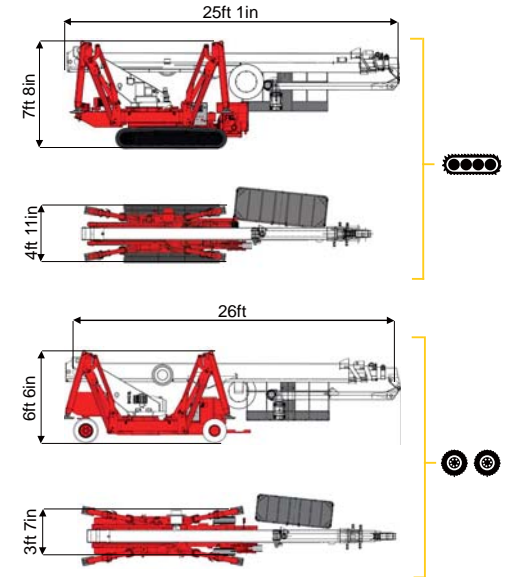
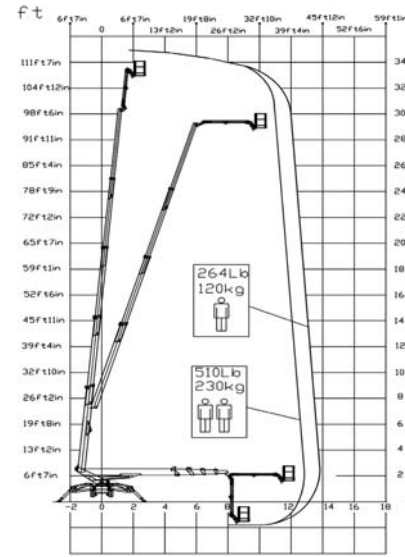


<< go back



114ft 10in ↑
49ft 3in →
510 lb 🧑🧑



44ft 3in	49ft 3in	26ft 3in	L1	L2	W1	W2	W3
510 lb	264 lb	264/510 lb	13ft 9in	19ft 5in	13ft 9in	11ft 5in	8ft 12in

BI-ENERGY
Diesel+AC



TSJ 115/C	🔋	114ft 10in	49ft 3in	510 lb	170°	660°	5ft 11inx2ft 4in	90°+80°	8ft 12in/13ft 9in	14%	49%	1,24 mph	14550 lb	9440 lb	66 psf	100,04 psf
TSJ 115/R	⊙ ⊙	114ft 10in	45ft 11in	510 lb	170°	660°	5ft 11inx2ft 4in	90°+80°	8ft 12in/13ft 9in	31%	12%	0,62 mph	14991 lb	9440 lb	67,88 psf	99,41 psf

Available version:

- BI-ENERGY (DIESEL+AC)
- ECO (DC+AC)
- HYBRID (DIESEL+DC)

AERIAL TITANS
866-874-0584
WWW.AERIALTITANS.COM



COMPANY WITH
QUALITY SYSTEM
CERTIFIED BY DNV GL
= ISO 9001 =

Palazzani Industrie S.p.A.
Via del Pavione, 4 - 25050 - Paderno F.C. (BS) - Italy
Tel. (+39) 0306857073
platforms@palazzani.it
www.palazzani.it

Characteristics and technical data are informative only and subjected to change without notice.