

## SJ1256 THS TELEHANDLER



### KEY FEATURES

- 12,000 lbs (5,443 kg) Maximum lift capacity
- 56' 3" (17.14 m) Maximum lift height
- 6,000 lbs (2,722 kg) Capacity @ maximum lift height (no outriggers)
- 7,000 lbs (3,175 kg) Capacity @ maximum lift height (on outriggers)
- 42' 4" (12.90 m) Maximum forward reach
- 1,000 lbs (454 kg) Capacity @ maximum forward reach (no outriggers)
- 3,500 lbs (1,588 kg) Capacity @ maximum forward reach (on outriggers)
- Tier 4 final 107hp/320 lb-ft Deutz TCD 3.6L engine
- 22,500 lbs Drawbar pull
- 3-Speed Dana powershift transmission & Dana axles
- Yoke-mounted lifting hook
- 48" Quick attach, floating pin carriage
- Pallet forks, 2.25" x 5" x 48", 12,000 lbs capacity

### TIRE OPTIONS

- Airless solid rubber 14 x 24
- Non-marking foam-filled 14 x 24 16PR rough terrain
- Non-marking airless solid rubber 14 x 24

### STANDARD FEATURES

- Axle mount outriggers
- Auxiliary hydraulics
- Engine block heater
- Quick attach carriage mount
- Rear window with wiper
- Side window
- Suspension seat
- Single multifunction pilot operated joystick control
- In-cab engine multifunction display
- Hydraulic test ports
- Lockable in-cab storage box
- Rear towing hitch pin
- Steel engine cowling
- Steel component and access covers
- Telematics ready
- ELEVATE Live
- 2-Year Gold Leaf Warranty (5-year structural warranty)

### FORK OPTIONS

- Pallet forks, 2.25" x 5" x 48", 60" or 72", 12,000 lbs capacity
- Fully tapered forks, 1.75" x 7" x 48", 12,000 lbs capacity
- Block forks, (set of 6) 2" x 1.5" x 46", 9,000 lbs capacity

† Standard lead times may be increased when optional equipment is added, consult factory.  
‡ Foam-filled tires, standard carriage only. Optional equipment will increase weight.

# SJ1256 THS TELEHANDLER

12,000 lbs (5,443 kg) capacity, 56' 3" (17.14 m) maximum lift height

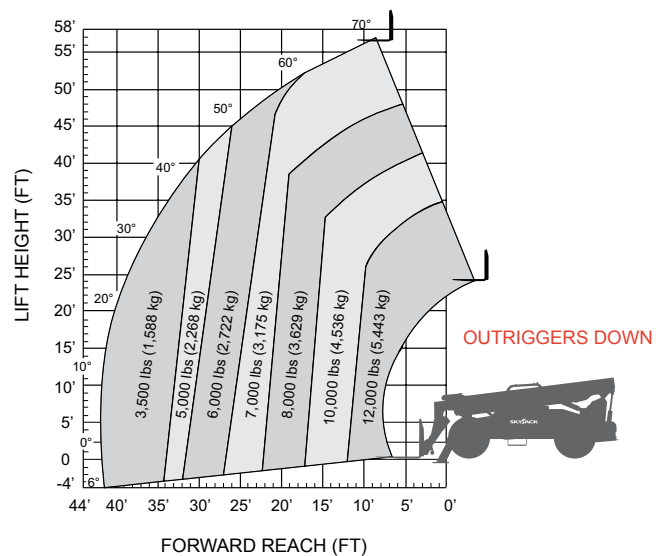
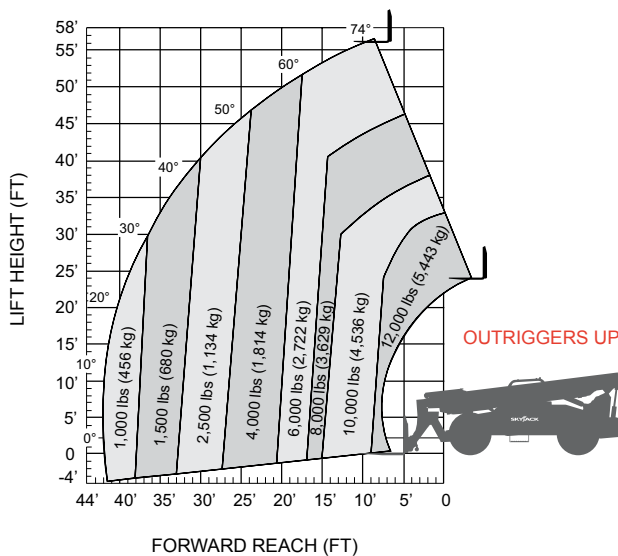
| SPECIFICATIONS                          | SJ1256 THS                           |
|---|--------------------------------------|
| Maximum Lift Capacity                   | 12,000 lbs (5,443 kg)                |
| Maximum Lift Height                     | 56' 3" (17.14 m)                     |
| Rated Lift Capacity @ Maximum Height    | 6,000 lbs (2,722 kg)                 |
| Rated Lift Capacity @ Max Height w. O/R | 7,000 lbs (3,175 kg)                 |
| Maximum Forward Reach                   | 42' 4" (12.90 m)                     |
| Rated Lift Capacity @ Maximum Reach     | 1,000 lbs (454 kg)                   |
| Rated Lift Capacity @ Max Reach w. O/R  | 3,500 lbs (1,588 kg)                 |
| Overall Length - Less Forks             | 23' 1" (7.03 m)                      |
| Overall Height - Stowed                 | 8' 6" (2.59 m)                       |
| Overall Width                           | 8' 5" (2.56 m)                       |
| Ground Clearance                        | 19" (48.26 cm)                       |
| Turning Radius - Outside                | 173" (4.39 m)                        |
| Operating Weight                        | 36,625 lbs (16,613 kg)               |
| Engine                                  | 107hp / 320 lb-ft Deutz TCD 3.6L T4F |
| Max Travel Speed - Forward              | 15 mph (24 km/h)                     |
| Drawbar Pull                            | 22,500 lbs                           |
| Transmission                            | Dana Powershift, 3 Speeds F/R        |
| Axles                                   | Dana                                 |
| Steering                                | 3 mode (Front Wheel, 4 Wheel, Crab)  |
| Tires                                   | Foam-Filled 14 x 24 16PR Grip Lug    |
| Fuel Tank Capacity                      | 35 gal. (132 L)                      |
| Hydraulic Reservoir                     | 43.85 gal. (166 L)                   |

## OPTIONS

- Closed cab (adds front and top window, sliding side window, wipers, full door, heater/defroster, operator fan)
- Air conditioning (closed cab only)
- Premium joystick
- Back up sensor
- Backup sensor and camera
- Service convenience package (remote axle grease points & clean drain engine oil pan valve)
- Cold weather package (cold start engine oil, 50/50 antifreeze mix, battery blanket & hyd. tank heater)
- Arctic weather package (cold start engine oil, 50/50 antifreeze mix, battery blanket, hyd. tank heater & arctic hydraulic oil)
- Four wheel fenders
- Road light package (2 front headlights, front & rear turn signals, tail lights, brake lights)
- Work light package (2 front facing & 2 rear facing halogen work lights)
- Boom light package (2 boom mounted LED work lights)
- Rotating beacon
- Positive air shut-off valve
- Pintle hitch (in lieu of standard hitch pin)
- Non-destructive testing
- ELEVATE telematics
- Warranty Options (3-year or 5-year plans available)

## QUICK ATTACH CARRIAGES/ATTACHMENTS

- 48", 60" or 72" Floating pin carriage, 12,000 lbs capacity
- 48", 60" or 72" Floating pin, side tilt carriage, 11,000 lbs capacity
- 72" Floating pin, swing carriage, 11,000 lbs capacity
- 53" Fork positioner, 12,000 lbs capacity
- 2' High capacity jib boom, 10,000 lbs capacity
- 12' or 15' Truss boom, 2,000 lbs capacity
- 1.75 Cubic yard bucket, 4,300 lbs capacity



Skyjack Head Office

IMPORTANT - Machine design complies with ANSI/ISO standards for rough terrain aerial and jib boom lift chart, unstable ground boom

**AERIAL TITANS** 866-874-0584  
WWW.AERIALTITANS.COM

