

**<< go back**



**Performance**

Rated Capacity	6,000 lb	2,722 kg
Maximum Lift Height	41 ft 11 in.	12.8 m
Load at Max Height	6,000 lb	2,722 kg
Maximum Forward Reach	27 ft 11 in.	8.51 m
Load at Max Reach	1,400 lb	635 kg
Frame Leveling	10°	
Lift Speed (boom retracted)		
Up	14.3 sec	
Down	10.5 sec	
Boom Speed		
Extended	17 sec	
Retracted	17.2 sec	
Top Travel Speed (4-Speed)	19 mph	31 kph
Drawbar Pull (loaded)	22,000 lb	98 kN
Outside Turning Radius	168 in.	4.27 m
Operating Weight	25,100 lb	11,385 kg

**Standard Specifications**

**Engine**

Make and Model	Cummins QSF3.8L Tier 4 F	
No. of Cylinders	4	
Displacement	229 cu in.	3.8 L
Gross Power Basic	74 hp	55 kW
Maximum Torque @ 1400 rpm	340 lb-ft	461 Nm
Fuel Tank Capacity	35 gal	132.5 L

**Transmission**

Powershift.  
4-speed forward and 3-speed reverse.

**Axles**

Full-time planetary 4-wheel drive.  
Oscillating rear axle with Stabil-Trak system.

**Brakes**

Hydraulically actuated inboard wet disc brakes.  
Emergency brake with transmission declutch feature.

**Tires**

Standard	370/75-28
Optional	Foam-Filled or Solid

**Cab**

Certified ROPS/FOPS structure	Rear view mirrors
Adjustible suspension seat with retractable seat belt	Single joystick control Integrated arm rest

**Steering 4-Wheel**

Power steering.  
Operator selectable 4-wheel circle, 4-wheel crab, 2-wheel front.  
Integrated arm rest.

**Instruments**

- DEF gauge
- Voltmeter
- Hourmeter
- Engine oil pressure gauge
- Temperature gauge
- Fuel gauge

**Hydraulic System-Implement**

Capacity	45.5 gal	172.2 L
Gear Pump	Variable flow, load sensitive hydraulic system.	
	Load holding valves on frame level, stabilizer, attachment tilt, extend and lift cylinders.	
	Auxiliary hydraulics used for all attachments equipped with cylinders or other hydraulic components. Consists of valves, controls and hydraulic lines.	

**Accessories & Options**

- Enclosed Cab
- Work Lights
- Road Lights
- Rotating Beacon
- Fenders
- Air Conditioning
- Reverse Sensing System

**Attachments**

Standard Carriage	50 in. 60 in. 72 in.	1.3 m 1.5 m 1.8 m
Side-Tilt Carriage	50 in. 60 in. 72 in.	1.3 m 1.5 m 1.8 m
Swing 90° Carriage	72 in.	1.8 m
Side-Shift Carriage	50 in.	1.3 m
Dual Fork Positioning Carriage	50 in.	1.3 m
Tower	8 ft (2.4 m); 50 in. (1.3 m) Standard Carriage	
Pallet Forks	2.36 in. x 4 in. x 48 in. 2.36 in. x 5 in. x 48 in. 2.00 in. x 6 in. x 72 in.	60 mm x 102 mm x 1.2 m 60 mm x 127 mm x 1.2 m 51 mm x 152 mm x 1.8 m
Lumber Forks	2.00 in. x 7 in. x 60 in. 2.36 in. x 6 in. x 60 in.	51 mm x 178 mm x 1.5 m 60 mm x 152 mm x 1.5 m
Cubing Forks	2 in. x 2 in. x 48 in.	51 mm x 51 mm x 1.2 m
Fork Extensions	90 in.	2.3 m
Material Bucket	72 in., 1.0 cu yd 96 in., 1.5 cu yd 102 in., 2.0 cu yd	1.8 m, 0.76 m <sup>3</sup> 2.4 m, 1.15 m <sup>3</sup> 2.6 m, 1.53 m <sup>3</sup>
Grapple Bucket	96 in., 1.75 cu yd	2.4 m, 1.34 m <sup>3</sup>
Truss Boom	12 ft, 2,000 lb 15 ft, 2,000 lb 12 ft with winch, 2,000 lb	3.7 m, 907 kg 4.6 m, 907 kg 3.7 m, 907 kg
Fork Mounted Work Platform	8 ft, 1,000 lb Capacity	2.4 m, 455 kg Capacity
Lifting Hook, Fork Mounted		
Material Handling Arm	4,000 lb Capacity	1,814 kg Capacity
Trash Hopper	72 in., 1.9 cu yd 2,000 lb Capacity	1.8 m, 1.5 m <sup>3</sup> 907 kg Capacity

**6042**  
TELEHANDLER

**AERIAL  
TITANS**

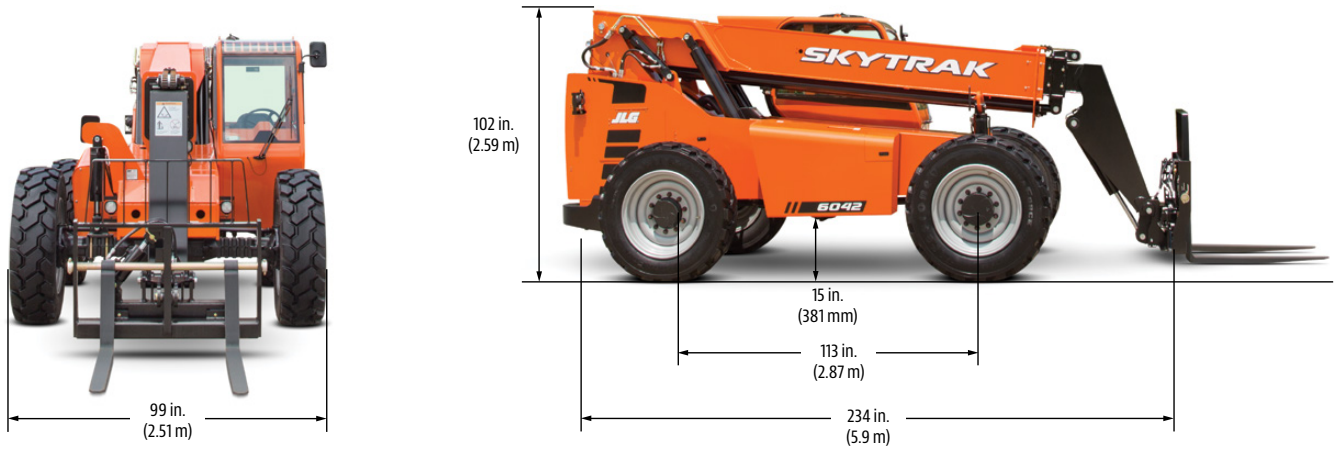
866-874-0584  
WWW.AERIALTITANS.COM

**SKYTRAK**

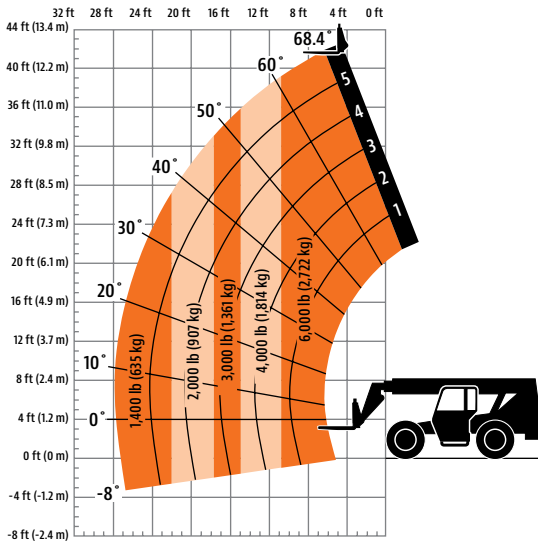
**<< go back**

**Dimensions**

All dimensions are approximate.



**Load Chart**



**AERIAL  
TITANS**  
866-874-0584  
WWW.AERIALTITANS.COM



**JLG Industries, Inc.**  
1 JLG Drive  
McConnellsburg, PA 17233-9533  
Telephone 717-485-5161  
Toll-free in US 877-JLG-LIFT  
Fax 717-485-6417  
[www.jlg.com](http://www.jlg.com)

**An Oshkosh Corporation Company**

**The JLG "1, 2 & 5" Warranty**

We provide coverage for one (1) full year on the entire machine, two (2) full years or 2,000 hours on the drivetrain and cover all specified major structural components for five (5) years. Due to continuous product improvements, we reserve the right to make specification and/or equipment changes without prior notification.

Part No.: 3132402  
R041810  
Printed in USA