

## Performance

Rated Capacity	2,700 lb	1,225 kg
Maximum Lift Height	13 ft 1 in.	4 m
Load at Max Height	1,555 lb	705 kg
Maximum Forward Reach	7 ft 1 in.	2.2 m
Load at Max Reach	1,200 lb	544 kg
Lift Speed (boom retracted)		
Up	10.9 sec	
Down	7.7 sec	
Boom Speed		
Extended	7.5 sec	
Retracted	4.5 sec	
Top Travel Speed	10.5 mph	17 kph
Drawbar Pull (loaded)	2,623 lb	11.7 kN
Outside Turning Radius	117 in.	3 m
Operating Weight	5,280 lb	2,400 kg

## Standard Specifications

### Engine

Make and Model	Kubota V-1505	
No. of Cylinders	4	
Displacement	91.2 cu in.	1.5 L
Gross Power Basic	24.8 hp	18.5 kW
Maximum Torque	68.3 lb-ft	92.6 Nm
Fuel Tank Capacity	14.5 gal	55 L

### Transmission

Hydrostatic  
1-speed forward and 1-speed reverse.

### Axles

Limited Slip  
Rear Oscillating  
Four Wheel Drive

### Brakes

Emergency brake spring applied and hydraulically released.  
Service brake with inching.

### Tires

Standard	11.0/65 x 12 Pneumatic Ag Tread Tires
Optional	Foam-Filled Ag Tread Tires, Pneumatic Non-marking Tires, Foam-Filled Non-marking Tires, Turf Tires

### Cab

Certified ROPS/FOPS structure	Single joystick controls
Adjustable suspension seat with retractable seat belt	Integrated arm rest
Rear view mirrors	Longitudinal Stability Indication System

### Steering 2-Wheel

Rear Pivot Power Steering

### Instruments

<input type="checkbox"/> Hourmeter	<input type="checkbox"/> Pre-heating indicator
<input type="checkbox"/> Engine oil pressure indicator	<input type="checkbox"/> Battery indicator
<input type="checkbox"/> Temperature indicator	<input type="checkbox"/> Air filter indicator
<input type="checkbox"/> Fuel gauge	



### Hydraulic System-Implement

Capacity	8.5 gal	32 L
----------	---------	------

Gear Pump

Holding valves.

Auxiliary hydraulics used for all attachments equipped with cylinders or other hydraulic components. Consists of valves, controls and hydraulic lines.

### Accessories & Options

<input type="checkbox"/> Enclosed Cab	<input type="checkbox"/> Front Brick Guard
<input type="checkbox"/> Work Lights	<input type="checkbox"/> 2 in. Ball Hitch
<input type="checkbox"/> Wiper Package	<input type="checkbox"/> Cold Weather Package

### Attachments

Standard Carriage	41 in.	1.0 m
Universal Carriage	41 in.	1.0 m
Pallet Forks	48 in.	1.2 m
General Purpose Bucket (Universal or JLG Coupler)	55 in.	1.4 m

# 3013

TELEHANDLER

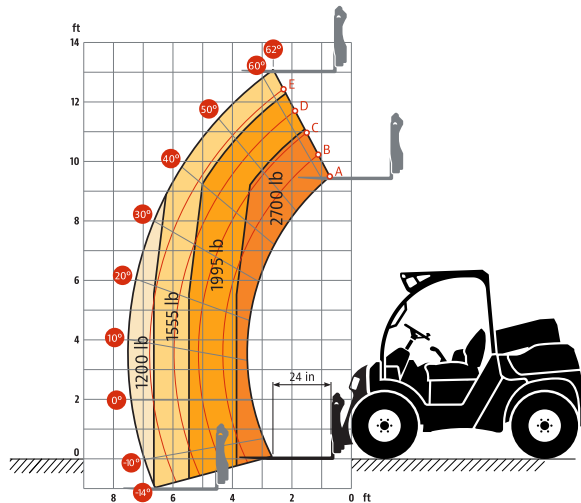
# SKYTRAK®

## Dimensions

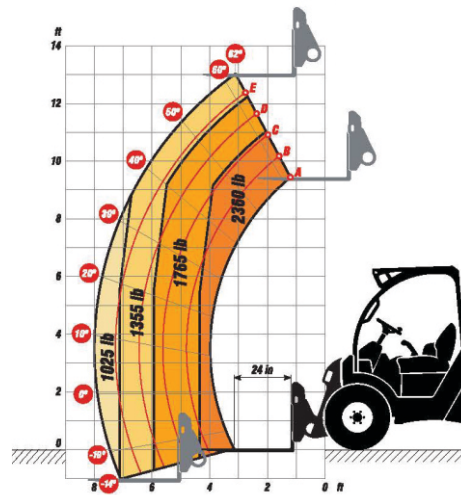
All dimensions are approximate.



## Load Chart



## Universal Skid Steer Coupler



For more information on this equipment  
please contact:

**AERIAL  
TITANS**  
(866)874-0584 AERIALTITANS.COM

**JLG®**

JLG Industries, Inc.  
1 JLG Drive  
McCconnellsburg, PA 17233-9533  
Telephone 717-485-5161  
Toll-free in US 877-JLG-LIFT  
Fax 717-485-6417  
[www.jlg.com](http://www.jlg.com)

An Oshkosh Corporation Company

## The JLG "1, 2 & 5" Warranty

We provide coverage for one (1) full year on the entire machine, two (2) full years or 2,000 hours on the drivetrain and cover all specified major structural components for five (5) years. Due to continuous product improvements, we reserve the right to make specification and/or equipment changes without prior notification.

Part No.: 3132253  
R112002  
Printed in USA