



# ZB2044

## TELEHANDLER

### **AERIAL TITANS**

#### KEY FEATURES

- 20,000 lbs (9,072 kg) Maximum lift capacity
- 44' 10" (13.67 m) Maximum lift height
- 10,000 lbs (4,536 kg) Capacity @ maximum lift Height (no outriggers)
- 12,000 lbs (5,443 kg) Capacity @ maximum lift Height (on outriggers)
- 27' 5" (8.36 m) Maximum Forward Reach
- 4,000 lbs (1,814 kg) Capacity @ maximum reach (no outriggers)
- 7,000 lbs (3,175 kg) Capacity @ maximum reach (on outriggers)
- Cummins Tier 4 Final QSB 4.5C, turbocharged and charge-air cooled diesel, 168hp @ 2300rpm
- Powershift, 3 speed transmission
- 3 Mode steering
- 72" Quick attach, floating pin carriage
- Pallet forks, 2.75" x 60" x 60", 22,100 lbs capacity

#### STANDARD FEATURES

- Axle mounted outriggers
- Rear axle "Stable-Lock" cylinder with backup accumulator
- Standard quick attach carriage mount system
- Auxiliary hydraulic for boom attachments
- Dual lift cylinders
- High pivot boom mount design
- Rear window and side screen
- Lockable under cab storage compartment / step
- Adjustable suspension seat with seat belt
- Dual joystick pilot operated controls for boom and frame level functions
- Tilt adjustable joystick console
- Gauge instrumentation
- Electronic powerview engine monitor/gauge
- Lockable steel swing up engine doors
- Dual batteries
- Independent front/rear brake systems
- Dual brake accumulators for dead engine braking
- Brake activated transmission disconnect
- Steel fuel and hydraulic tanks
- Mirrors, right and left side
- Remote grease fittings for axle trunnion mount lubrication
- Easy to remove steel component and access covers
- 2-Year Gold Leaf Warranty (5-year structural warranty)

† Standard lead times may be increased when optional equipment is added, consult factory.

‡ Foam-filled tires, standard carriage only. Optional equipment will increase weight.

# ZB2044 TELEHANDLER

20,000 lbs (9,072 kg) capacity, 44' 10" (13.67 m) maximum lift height

SPECIFICATIONS	ZB2044
Maximum Lift Capacity	20,000 lbs (9,072 kg)
Maximum Lift Height	44' 10" (13.67 m)
Rated Lift Capacity @ Maximum Height	10,000 lbs (4,536 kg)
Rated Lift Capacity @ Maximum Height w. O/R	12,000 lbs (5,443 kg)
Maximum Forward Reach	27' 5" (8.36 m)
Rated lift Capacity @ Maximum Reach	4,000 lbs (1,814 kg)
Rated Lift Capacity @ Maximum Reach w. O/R	7,000 lbs (3,175 kg)
O/A Length - Less Forks	20' 3" (6.17 m)
Overall Height - Stowed	9' (2.74 m)
Overall Width	8' 6" (2.59 m)
Ground Clearance	18" (46 cm)
Turning Radius - Outside	18' 4" (5.59 m)
Operating Weight	45,000 lbs (20,412 kg)
Engine	168hp Cummins QSB 4.5C T4F
Max Travel Speed - Forward	20.5 mph (33 kmh)
Transmission	Dana powershift, 3 speed F/R
Axles	Axletech steerable outboard planetary
Service Brakes	4 wheel disc
Parking Brakes	Pinion mounted dry disc on front axle
Steering	3 mode (2 wheel, 4 wheel, crab)
Tires	Foam-Filled 17.5 x 25 16PR grip lug
Fuel Tank Capacity	48 gal. (185 L)
Hydraulic Reservoir	55 gal. (208 L)

## OPTIONS

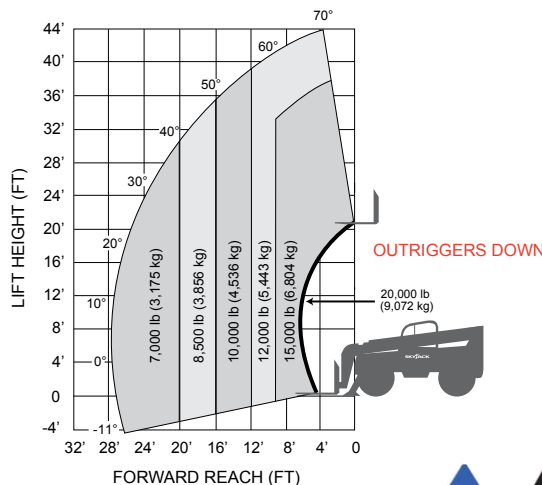
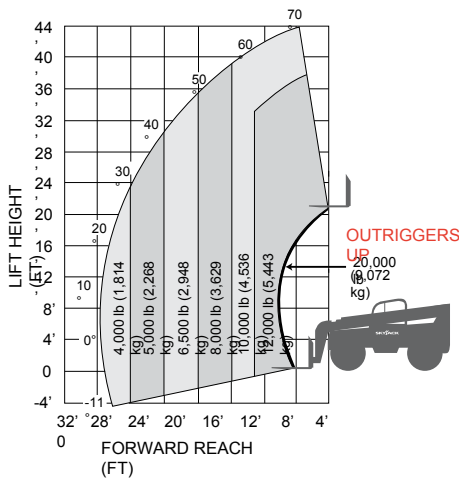
- Closed cab (adds front and top window, sound insulation, heater/defroster, and dome light)
- Air conditioning (closed cab only)
- Back up sensor
- Backup sensor and camera
- Mine package (backup braking & steering systems, drive shaft covers)
- Front and rear fenders
- Lighting kit with guards - 2 front white / 2 rear red
- Front and rear turn signals with flashers
- Extra operating light with guard
- Boom mounted operating lights
- Rotating beacon
- Positive air shut-off valve
- Non destructive testing
- ELEVATE telematics
- Warranty options (3-year and 5-year options available)

## FORK OPTIONS

- Pallet forks, 2.75" x 6" x 60", 72" or 96"

## QUICK ATTACH CARRIAGES / ATTACHMENTS

- 72" or 84" Dual hydraulic fork positioner, 20,000 lbs capacity
- 72" or 84" Side shift carriage and dual hydraulic fork positioner, 19,000 lbs capacity
- 5' Jib boom, 20,000 lbs capacity
- 2.0 cu. yd. Light material handling bucket, 4,000 lbs capacity
- Hydraulic winch, 15,000 lbs capacity
- Pipe and pole clamp, 18,000 lbs capacity
- Rotating pipe and pole manipulator, 8,000 lbs capacity
- Bridge stripper, 18,000 lbs capacity



Skyjack Head Office  
 55 Campbell Rd. Guelph, ON Canada N1H 1B9  
 Sales Inquiries: 1-877-755-4387 (1-877-SJLIFTS)  
 Main Switchboard: 1-800-265-2738  
 Phone: 519-837-0888  
 Fax: 519-837-8104  
 Email: skyjack@skyjack.com

[www.skyjack.com](http://www.skyjack.com)

**IMPORTANT** - Machine design complies with ANSI/ITSDF B56.6-2016 stability requirements for rough terrain forklifts. Rated capacities shown are with machine on firm level ground, steered straight with frame level and on properly inflated tires. Read boom angle and boom extension, then determine allowable load from chart. Do not exceed rated loads as dangerous and unstable machine conditions will result. Always travel with boom retracted in the lowest possible position.



866 874-0584 AERIALTITANS.COM

