



SJ519 TH

TELEHANDLER

AERIAL TITANS

KEY FEATURES

- 5,500 lbs (2,495 kg) Maximum lift capacity
- 19' 1" (5.82 m) Maximum lift height
- 4,400 lbs (1,996 kg) Capacity @ maximum lift height
- 11' 1" (3.44 m) Maximum forward reach
- 2,000 lbs (907 kg) Capacity @ maximum forward reach
- DPF & DEF Free Tier 4 Final 74hp/184 lb-ft Deutz TCD 2.2L engine
- Hydrostatic drive & Dana axles
- 3 Mode steering
- Yoke mounted lifting shackle
- 48" Quick attach, floating pin carriage
- Pallet forks, 1.5" x 4" x 48", 5,500 lbs capacity

TIRE OPTIONS

- Foam-filled grip lug 12 x 16.5
- Airless solid rubber 33 x 12
- Non-marking airless solid rubber 33 x 12
- Non-marking air-filled rough terrain 12 x 16.5
- Non-marking foam-filled rough terrain 12 x 16.5
- Non-directional air-filled 12 x 16.5
- Non-directional foam-filled 12 x 16.5

STANDARD FEATURES

- 18 GPM Auxiliary hydraulics with hydraulic flow control valve
- Quick attach carriage mount
- Rear and side window
- Suspension seat
- Single multifunction pilot operated joystick control
- In-cab engine multifunction display
- Hydraulic test ports
- Lockable in-cab storage box
- Steel engine bay cowling
- Steel component and access covers
- 2-Year Gold Leaf Warranty (5-year structural warranty)

FORK OPTIONS

- Pallet forks, 1.5" x 4" x 48" or 60", 5,500 lbs capacity
- Fully tapered forks, 1.5" x 4" x 48", 5,500 lbs capacity
- Block forks, (set of 4) 2" x 1.5" x 48", 5,500 lbs capacity

□ Standard lead times may be increased when optional equipment is added, consult factory.
 ‡ Air-filled tires, standard carriage only. Optional equipment will increase weight.

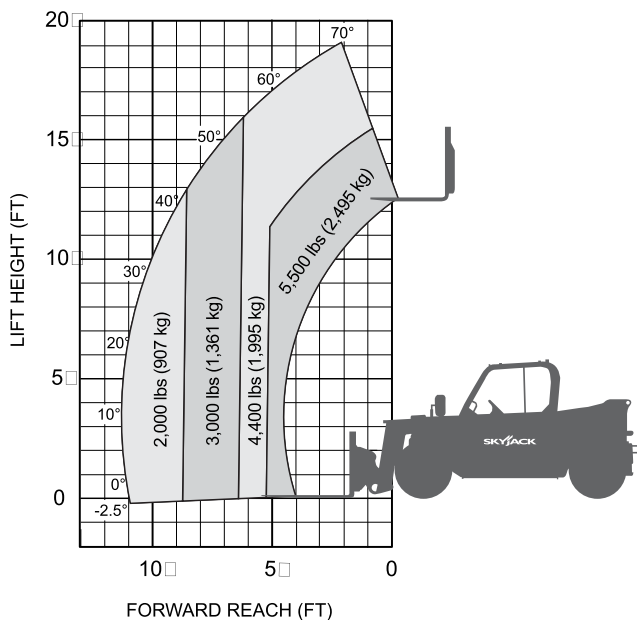
SJ519 TH TELEHANDLER

5,500 lbs (2,495 kg) capacity, 19' 1" (5.82 m) maximum lift height

SPECIFICATIONS	SJ519 TH
Maximum Lift Capacity	5,500 lbs (2,495 kg)
Maximum Lift Height	19' 1" (5.82 m)
Rated Lift Capacity @ Maximum Height	4,400 lbs (1,996 kg)
Maximum Forward Reach	11' 1" (3.38 m)
Rated Lift Capacity @ Maximum Reach	2,000 lbs (907 kg)
Overall Length - Less Forks	13' 5" (4.09 m)
Overall Height - Stowed	6' 4" (1.93 m)
Overall Width	5' 11.5" (1.81 m)
Ground Clearance	11" (27.94 cm)
Turning Radius - Outside	125" (3.17 m)
Operating Weight	10,500 lbs (4,763 kg)
Engine	74hp/184 lb-ft Deutz TCD 2.2L T4F
Max Travel Speed - Forward	15mph (24 km/h)
Drawbar Pull	8,700 lbs
Breakout Force	10,600 lbs
Transmission	Hydrostatic, 1 F/R
Axles	Dana
Steering	3 Mode (Front Wheel, 4 Wheel, Crab)
Tires	Pneumatic 12 x 16.5 12PR Grip Lug
Fuel Tank Capacity	15.1 gal. (57 L)
Hydraulic Reservoir	18.7 gal. (70 L)

OPTIONS

- Closed cab (adds front and top window, sliding side window, wipers, full door, heater/defroster, operator fan)
- Air conditioning (closed cab only)
- Partially enclosed cab (adds front & top windows, wipers)
- Backup sensor
- Backup sensor and camera
- Service convenience package (remote axle grease points & clean drain oil valve)
- Cold weather package (includes cold start engine oil, 50/50 antifreeze mix, battery blanket, hyd tank heater & engine block heater)
- Block heater
- Four wheel fenders
- Fire extinguisher bracket
- Road light package (2 front headlights, front & rear turn signals, tail lights, brake lights)
- Boom light package (2 boom mounted LED work lights)
- Work light package (front and rear facing LED work lights)
- Rotating beacon
- Positive air shut-off valve
- Non-destructive testing
- FLEXDRIVE Drive speed select dial
- Hydraulic carriage connect
- Tilt steering
- ELEVATE telematics
- Warranty options (3-year and 5-year options available)



QUICK ATTACH CARRIAGES/ATTACHMENTS

- 48" Floating pin carriage, 5,500 lbs capacity
- 48" Floating pin, side tilt carriage, 4,700 lbs capacity
- 48" Floating pin, side shift carriage, 4,700 lbs capacity
- Skid steer attachment adapter plate, 5,500 lbs capacity
- 6' Truss boom, 2,000 lbs capacity
- 66" Bucket, 4,000 lbs capacity



866 874-0584 AERIALTITANS.COM

Skyjack Head Office
 55 Campbell Rd. Guelph, ON Canada N1H 1B9
 Sales Inquiries: 1-877-755-4387 (1-877-SJLIFTS)
 Main Switchboard: 1-800-265-2738
 Phone: 519-837-0888
 Fax: 519-837-8104
 Email: skyjack@skyjack.com

www.skyjack.com

IMPORTANT: This machine complies with ANSI/ITSDF B56.6-2016 stability requirements for rough terrain forklifts. Rated capacities shown are with machine on firm level ground, steered straight with frame level and on properly inflated tires. Read boom angle and boom extension, then determine allowable load from chart. Do not exceed rated loads as dangerous and unstable machine conditions will result. Always travel with boom retracted in the lowest possible position.

