

## AERIAL TITANS



### KEY SPECS

**Platform Height**  
45-ft / 13.72-m

**Up and Over Reach**  
25-ft 3-in / 7.7-m

**Horizontal Outreach**  
23-ft 9-in / 7.24-m

**Platform Capacity**  
500-lb / 227-kg

### KEY FEATURES

- Maximum maneuverability by moving over uneven surfaces with Automatic Traction Control.
- Produce zero emissions, 100% environmentally friendly.
- Achieve optimum productivity with longer duty cycles.
- Enhanced up and over access with jib.

### ACCESSORIES & OPTIONS

- 1/2-in Airline to Platform
- Ambient White Noise Alarm
- Batteries, 305 Amp-Hr AGM
- Bolt-on Fall Arrest System, 30 x 48-in, 30 x 60-in<sup>1,3,6</sup>
- Inverter - 2000W<sup>2</sup>
- Light Package<sup>5</sup>
- Platform Mesh to Mid or Top Rail<sup>3</sup>
  - Aluminum or Plastic
- Platforms
  - Drop Bar, 30 x 36-in, 30 x 48-in, 30 x 60-in, 30 x 72-in
  - Fall Arrest, Rear Entry<sup>4</sup>, 30 x 60-in, 36 x 72-in
  - Inward Self-Closing Swing Gate, 30 x 48-in, 30 x 60-in, 30 x 72-in
- Platform Padding<sup>3,7</sup>
  - 30 x 48-in, 30 x 60-in
  - Fall Arrest (Platform Required) 36 x 72-in
- SkySense<sup>®</sup> Enhanced Detection System
- Soft Touch, 30 x 60-in<sup>3</sup>
- Storage Tray - Center
- UL EE Rating

1. Requires Self-Closing Gate.  
 2. Not Available On UL EE Rating.  
 3. Not Compatible with Bolt On Fall Arrest, Platform Mesh, Platform Rail Extensions, SkySense or Soft Touch (Excludes Option Noted).  
 4. Requires Additional Counterweight.  
 5. Includes Platform Lights, Head and Tail Lights.  
 6. Is Compatible with Platform Mesh.  
 7. Is Compatible with Mesh to Mid Rail.

Additional Accessories and Options Available Via JLG Aftermarket.

### STANDARD SPECIFICATIONS

#### Performance

Platform Height	45-ft / 13.72-m
Horizontal Outreach	23-ft 9-in / 7.24-m
Up and Over Clearance	25-ft 3-in / 7.7-m
Swing	360 Degrees Non-Continuous
Platform Capacity	500-lb / 227-kg
Platform Rotator	180 Degrees Hydraulic
Jib Range of Articulation (Vertical)	141 Degrees (+86, -55)
Weight*	14,400-lb / 6,532-kg
Ground Bearing Pressure	110 psi / 7.6 kg/cm <sup>2</sup>
Max Drive Speed	4.5 mph / 7.2 km/h
Gradeability	30%
Turning Radius Inside (2WS/4WS)	2-ft / .61-m
Turning Radius Outside (2WS/4WS)	10-ft 4-in / 3.15-m

#### Power Source

Electrical System	48V DC
Batteries	8 x 6V, 375 amp-hr
Drive Motors	Dual Electric Traction

#### Tires

Standard	In240/55D17.5 Foam-Filled Non-marking
Optional	26 x 7 x 20 Non-marking 240/55 x 17.5 Foam-filled

#### Hydraulic System

Capacity	4 gal / 15.14 L
Motor/Pump	Permanent Magnet Motor/Gear Pump

### STANDARD FEATURES

- 110V-AC Receptacle in the Platform
- 12V DC Auxilliary Power
- 180 Degree Hydraulic Platform Rotator
- 3 Degree Tilt Cut-out
- All Motion Alarm
- Automatic Traction Control (ATC)
- Battery Condition Indicator
- Brushless AC Motors
- ClearSky Smart Fleet™ Hardware (CS550)
- Horn
- Hourmeter
- LED Motion/Amber Beacon (CS550)
- Lifting/Tie Down Lugs
- Load Sensing System
- Platform Console Machine Status Light Panel\*\*
- SkyGuard SkyLine™
- Tilt Light and Alarm



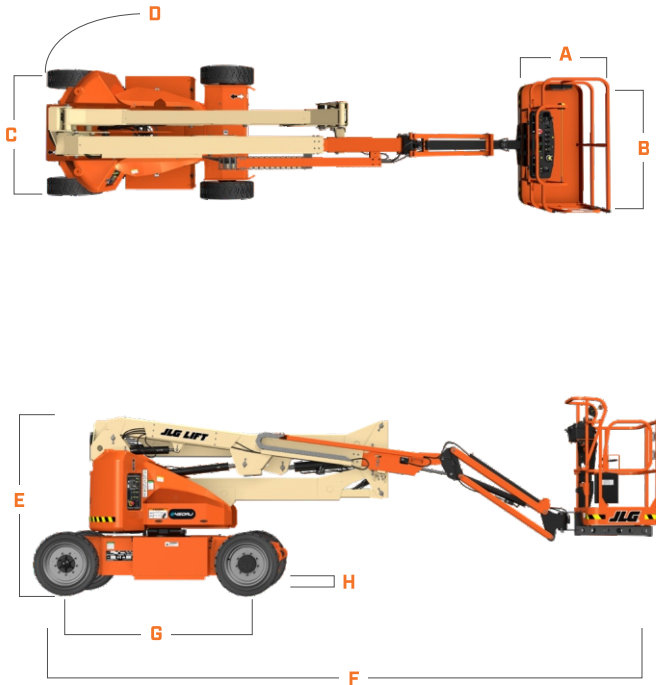
866 874-0584 AERIALTITANS.COM

\*Certain options or country standards increase weight.  
 \*\*Provides indicator lights at platform control console for system distress, low fuel, degree tilt light and foot switch status.

## AERIAL TITANS

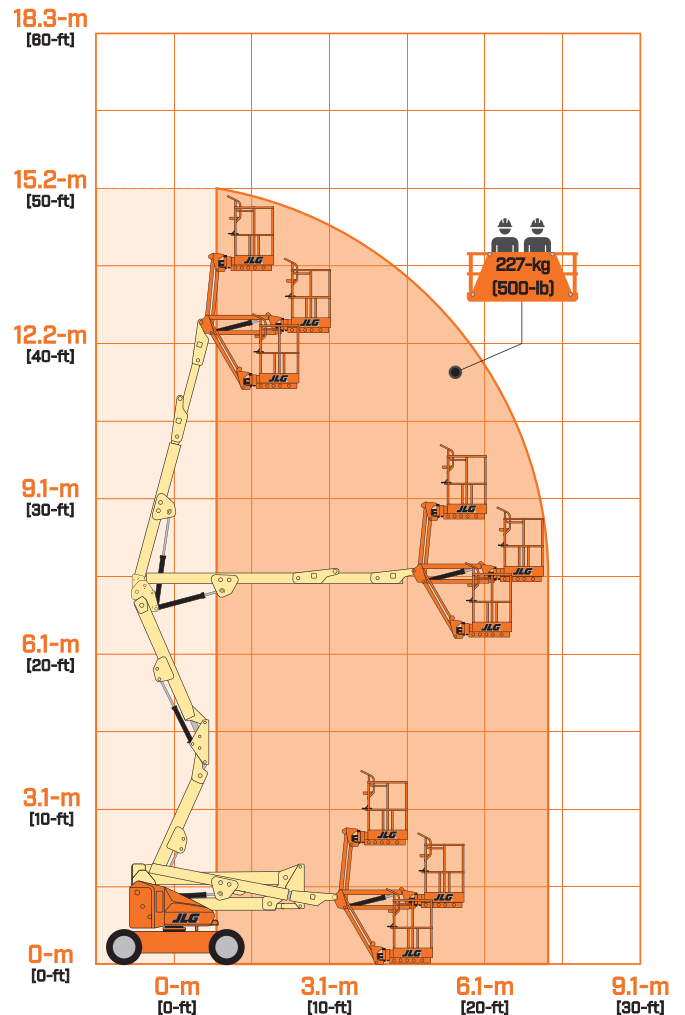
### DIMENSIONS

All dimensions are approximate



A. Platform Width	30-in / 76-cm
B. Platform Length	60-in / 1.52-m
C. Machine Width	5-ft 9-in / 1.75-m
D. Tailswing	0-in / 0-cm
E. Machine Height	6-ft 7-in / 2.01-m
F. Machine Length	21-ft 2-in / 6.45-m
G. Wheelbase	6-ft 7-in / 2.01-m
H. Ground Clearance	8-in / 20-cm

### REACH DIAGRAM



# AERIAL TITANS

866 874-0584 AERIALTITANS.COM



We provide coverage for one (1) full year, and cover all specified major structural components for five (5) years. Due to continuous product improvements, we reserve the right to make specification and/or equipment changes without prior notification. This machine meets or exceeds applicable ANSI and CSA requirements based on machine configuration as originally manufactured for intended applications. Please reference the serial number plate on the machine for additional information.



JLG INDUSTRIES, INC.  
Toll-free US 877-JLG-LIFT  
JLG.com

An Oshkosh Corporation Company