

E300AJP

ELECTRIC BOOM

BOOM LIFT



AERIAL TITANS



KEY SPECS

Platform Height 29-ft 5-in / 8.96-m	Up and Over Reach 13-ft 2-in / 4.01-m
Horizontal Outreach 20-ft 1-in / 6.12-m	Platform Capacity 500-lb / 227-kg

KEY FEATURES

- Achieve maximum maneuverability by moving over uneven surfaces with Automatic Traction Control.
- Achieve optimum productivity with longer duty cycles.
- Produces zero emissions, 100% environmentally friendly.
- Enhanced up and over access with jib.

ACCESSORIES & OPTIONS

- Ambient White Noise Alarm
- Batteries, 375 ah
 - 375 ah, 305 ah AGM
- Hostile Environment Package¹
- Inverter - 48V, 1000W²
- Platform Mesh to Mid or Top Rail
 - Aluminum or Plastic³
- Platforms
 - Drop Bar, 30 x 48-in
 - Inward Self-Closing Swing Gate, 30 x 48-in
- Storage Tray - Center
- UL EE Rating

1. Includes Console Cover, Boom Wipers and Cylinder Bellows

2. Not Available On UL EE Rating.

3. Requires Self-Closing Gate.

Additional Accessories and Options Available Via JLG Aftermarket.

STANDARD SPECIFICATIONS

Performance

Platform Height	29-ft 5-in / 8.96-m
Horizontal Outreach	20-ft 1-in / 6.12-m
Up and Over Clearance	13-ft 2-in / 4.01-m
Swing	350 Degrees Non-Continuous
Platform Capacity	500-lb / 227-kg
Platform Rotator	180 Degrees Hydraulic
Weight*	15,400-lb / 6,985-kg
Ground Bearing Pressure	170 psi / 11.95 kg/cm ²
Max Drive Speed	4.5 mph / 7.2 km/h
Gradeability	25%
Turning Radius Inside (2WS/4WS)	5-ft / 1.52-m
Turning Radius Outside (2WS/4WS)	10-ft 2-in / 3.1-m

Power Source

Electrical System	48V DC
Batteries	8 x 6V, 305 amp-hr
Drive Motors	Dual Electric Traction

Tires

Standard	25 x 7 x 12-in Non-marking
----------	----------------------------

Hydraulic System

Capacity	2.1 gal / 7.95 L
Motor/Pump	Permanent Magnet Motor/Gear Pump

STANDARD FEATURES

- 110V-AC Receptacle in the Platform
- 12V DC Auxilliary Power
- 180 Degree Hydraulic Platform Rotator
- 3 Degree Tilt Cut-out
- All Motion Alarm
- Automatic Traction Control (ATC)
- Battery Condition Indicator
- Brushless AC Motors
- ClearSky Smart Fleet™ Hardware (CS550)**
- Horn
- Hourmeter
- LED Motion/Amber Beacon (CS550)**
- Lifting/Tie Down Lugs
- Load Sensing System
- Platform Console Machine Status Light Panel***
- SkyGuard SkyLine™
- Tilt Light and Alarm

*Certain options or country standards increase weight.

**Standard beacon and ClearSky Smart Fleet hardware availability varies by model throughout 2023.

***Provides indicator lights at platform control console for system distress, low fuel, degree tilt light and foot switch status.



866 874-0584 AERIALTITANS.COM

E300AJP

ELECTRIC BOOM

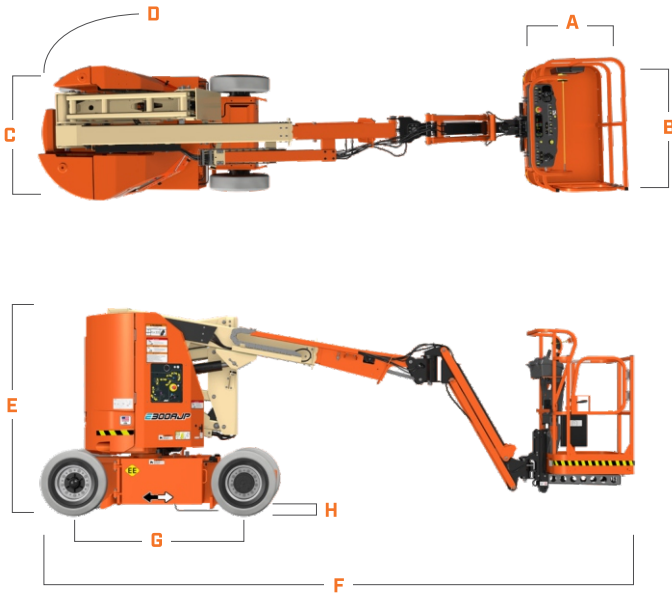
BOOM LIFT



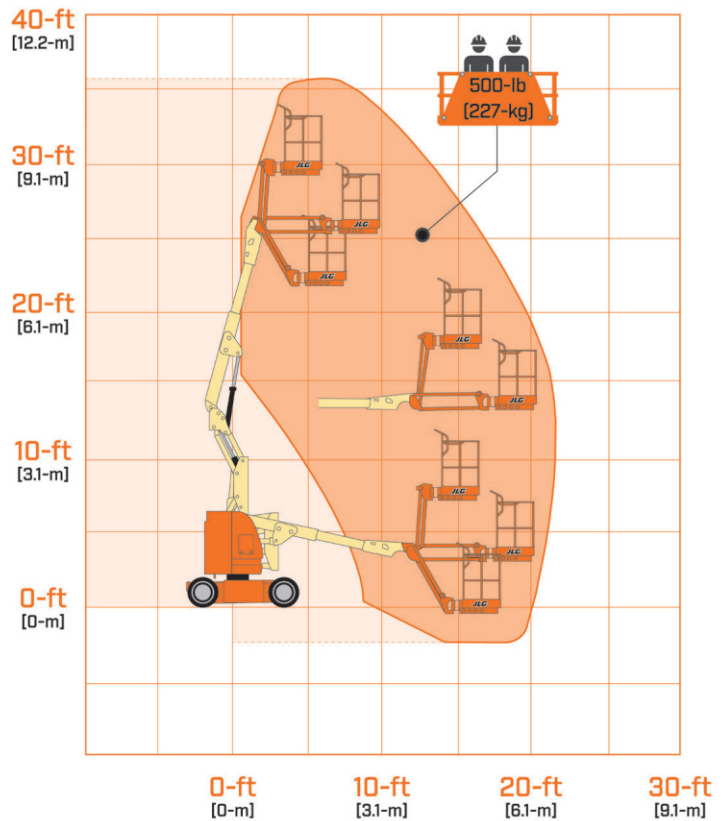
AERIAL TITANS

DIMENSIONS

All dimensions are approximate



REACH DIAGRAM



- A. Platform Width 30-in / 76-cm
- B. Platform Length 48-in / 1.22-m
- C. Machine Width 4-ft / 1.22-m
- D. Tailswing 0-in / 0-cm
- E. Machine Height 6-ft 7-in / 2.01-m
- F. Machine Length 18-ft 10-in / 5.74-m
- G. Wheelbase 5-ft 5-in / 1.65-m
- H. Ground Clearance 4-in / 10-cm

AERIAL TITANS

866 874-0584 AERIALTITANS.COM



We provide coverage for one (1) full year, and cover all specified major structural components for five (5) years. Due to continuous product improvements, we reserve the right to make specification and/or equipment changes without prior notification. This machine meets or exceeds applicable ANSI and CSA requirements based on machine configuration as originally manufactured for intended applications. Please reference the serial number plate on the machine for additional information.



JLG INDUSTRIES, INC.
Toll-free US 877-JLG-LIFT
JLG.com

An Oshkosh Corporation Company