



## Performance

|                             |             |          |
|-----------------------------|-------------|----------|
| Rated Capacity              | 7,000 lb    | 3,175 kg |
| Maximum Lift Height         | 42 ft       | 12.8 m   |
| Load at Max Height          | 6,000 lb    | 2,722 kg |
| Maximum Forward Reach       | 29 ft 1 in. | 8.86 m   |
| Load at Max Reach           | 1,000 lb    | 454 kg   |
| Frame Leveling              | 10°         |          |
| Lift Speed (boom retracted) |             |          |
| Up                          | 11.3 sec    |          |
| Down                        | 9 sec       |          |
| Boom Speed                  |             |          |
| Extended                    | 11 sec      |          |
| Retracted                   | 11.5 sec    |          |
| Top Travel Speed (4-Speed)  | 18 mph      | 29 kph   |
| Drawbar Pull (loaded)       | 19,000 lb   | 84.5 kN  |
| Outside Turning Radius      | 12 ft       | 3.66 m   |
| Operating Weight            | 21,476 lb   | 9,741 kg |

## Standard Specifications

### Engine

|                            |                          |        |
|----------------------------|--------------------------|--------|
| Make and Model             | Cummins QSF3.8L Tier 4 F |        |
| No. of Cylinders           | 4                        |        |
| Displacement               | 232 cu in.               | 3.8 L  |
| Gross Power Basic          | 74 hp                    | 55 kW  |
| Maximum Torque @ 2,500 rpm | 295 lb-ft                | 400 Nm |
| Fuel Tank Capacity         | 38.3 gal                 | 145 L  |

### Transmission

Powershift 4-speed forward and 3-speed reverse.

### Axles

Trunnion mounted planetary steer axles. Integral steer cylinder.  
High bias limited slip differential on front axle.

### Brakes

Service brakes are inboard wet disc brake on front and rear axles.  
Parking brakes are wet disc spring-applied hydraulic release on front axle.

### Tires

|          |                      |
|----------|----------------------|
| Standard | 370/75-28            |
| Optional | Foam-Filled or Solid |

### Cab

- Certified ROPS/FOPS structure   
 Horn   
 Tilt & declutch on joystick  
 Adjustable seat   
 Single joystick controls   
 Anti-theft

### Steering 4-Wheel

Power steering with manual backup.  
Operator selectable 4-wheel circle, 4-wheel crab, 2-wheel front.

### Instruments

- Volt meter   
 Engine oil pressure gauge   
 Fuel gauge  
 Hourmeter   
 Temperature gauge   
 DEF gauge

### Hydraulic System-Implement

|          |        |         |
|----------|--------|---------|
| Capacity | 40 gal | 151.5 L |
|----------|--------|---------|

Piston pump. Auxiliary hydraulics used for all attachments equipped with cylinders or other hydraulic components.

## Accessories & Options

- |  |   |   |
|--|---|---|
| <input type="checkbox"/> Enclosed Cab        | <input type="checkbox"/> Hydraulic Coupler                            | <input type="checkbox"/> Reverse Sensing System             |
| <input type="checkbox"/> Auxiliary Electrics | <input type="checkbox"/> Fenders                                      | <input type="checkbox"/> Boom Brushes                       |
| <input type="checkbox"/> Road Lights         | <input type="checkbox"/> Brick Guards                                 | <input type="checkbox"/> Secondary Steering                 |
| <input type="checkbox"/> Air Conditioning    | <input type="checkbox"/> Arctic Package                               | <input type="checkbox"/> Wiper Package                      |
| <input type="checkbox"/> Work Lights         | <input type="checkbox"/> Multi-Function Display with Reversing Camera | <input type="checkbox"/> White Noise Backup Alarm           |
| <input type="checkbox"/> Rotating Beacon     | <input type="checkbox"/> Ride Control                                 | <input type="checkbox"/> 110 hp (83 kW) Tier 4 Final Engine |

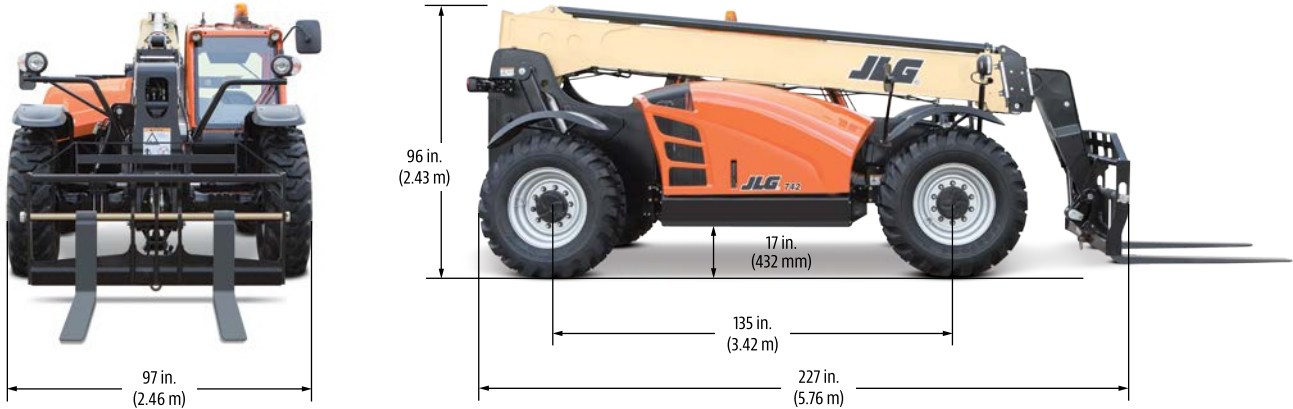
## Attachments

|                                |   |  |
|--------------------------------|---|--|
| Standard Carriage              | 50 in.<br>60 in.<br>72 in.  | 1.3 m<br>1.5 m<br>1.8 m  |
| Side-Tilt Carriage             | 50 in.<br>60 in.<br>72 in.  | 1.3 m<br>1.5 m<br>1.8 m  |
| Swing 90° Carriage             | 72 in.  | 1.8 m  |
| Dual Fork Positioning Carriage | 50 in.  | 1.3 m  |
| Side-Shift Carriage            | 50 in.  | 1.3 m  |
| Tower                          | 8 ft  | 2.4 m  |
| Tower with Side Tilt           | 8 ft  | 2.4 m  |
| Pallet Forks                   | 2.36 in. x 4 in. x 48 in.<br>2.36 in. x 5 in. x 48 in.<br>2.00 in. x 6 in. x 72 in. | 60 mm x 102 mm x 1.2 m<br>60 mm x 127 mm x 1.2 m<br>51 mm x 152 mm x 1.8 m             |
| Lumber Forks                   | 2.00 in. x 7 in. x 60 in.<br>2.36 in. x 6 in. x 60 in.                              | 51 mm x 178 mm x 1.5 m<br>60 mm x 152 mm x 1.5 m                                       |
| Cubing Forks                   | 2 in. x 2 in. x 48 in.  | 51 mm x 51 mm x 1.2 m  |
| Fork Extensions                | 90 in.  | 2.3 m  |
| Material Bucket                | 72 in., 1.0 cu yd<br>96 in., 1.5 cu yd<br>102 in., 2.0 cu yd                        | 1.8 m, 0.76 m <sup>3</sup><br>2.4 m, 1.15 m <sup>3</sup><br>2.6 m, 1.53 m <sup>3</sup> |
| Fork-Mounted Bucket            | 60 in., 1.0 cu yd<br>2,000 lb Capacity  | 1.5 m, 0.76 m <sup>3</sup><br>907 kg Capacity  |
| Grapple Bucket                 | 96 in., 1.75 cu yd  | 2.4 m, 1.34 m <sup>3</sup>   |
| Truss Boom                     | 3 ft (winch), 4,000 lb Capacity   | 0.9 m, 1,814 kg Capacity   |
| Truss Boom                     | 12 ft, 2,000 lb<br>15 ft, 2,000 lb<br>12 ft with winch, 2,000 lb                    | 3.7 m, 907 kg<br>4.6 m, 907 kg<br>3.7 m, 907 kg  |
| Fork Mounted Work Platform     | 8 ft, 1,000 lb Capacity   | 2.4 m, 455 kg Capacity   |
| Material Handling Arm          | 4,000 lb Capacity   | 1,814 kg Capacity  |
| Trash Hopper                   | 72 in., 1.9 cu yd   | 1.8 m, 1.5 m <sup>3</sup>  |
| Sweeper                        | 105 in., 53 cu yd<br>1,717 lb Capacity  | 2.67 m, 0.41 m <sup>3</sup><br>779 kg Capacity   |
| Lifting Hook-Fork Mounted      |   |  |
| Lifting Hook-Coupler Mounted   |   |  |

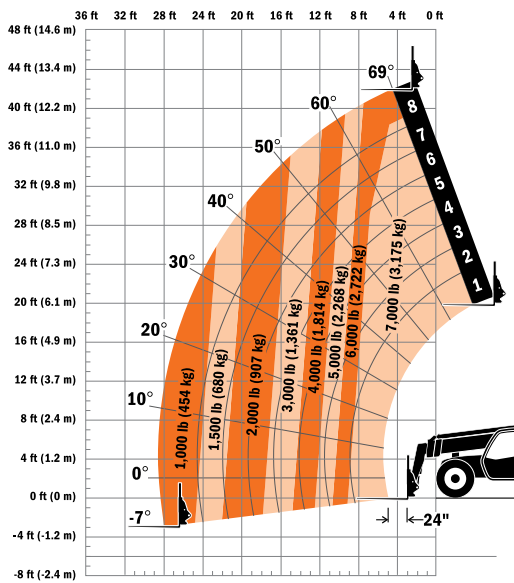
### AERIAL TITANS

#### Dimensions

All dimensions are approximate.



#### Load Chart



### AERIAL TITANS

866 874-0584 AERIALTITANS.COM



#### The JLG "1 & 5" Warranty

JLG Industries, Inc. backs its products with its exclusive "1 & 5" Warranty. We provide coverage on all products for one (1) full year, and cover all specified major structural components for five (5) years. Due to continuous product improvements, we reserve the right to make specification and/or equipment changes without prior notification. This machine meets or exceeds applicable OSHA Regulations in 29 CFR 1910.67, 29 CFR 1926.453, ANSI A92.5-2006, and CSA Standard CAN3-B354.2-M82, as originally manufactured for intended applications.

Part No.: 3132247  
Printed in USA

**JLG Industries, Inc.**  
1 JLG Drive  
McConnellsburg, PA 17233-9533  
Telephone 717-485-5161  
Toll-free in US 877-JLG-LIFT  
Fax 717-485-6417  
[www.jlg.com](http://www.jlg.com)

**An Oshkosh Corporation Company**