

660SJC

TELESCOPIC CRAWLER BOOM LIFT

BOOM LIFT



AERIAL TITANS



KEY SPECS

Platform Height

65-ft 7-in / 19.99-m

Drive Speed

1.6-mph / 2.6 km/h

Horizontal Outreach

57-ft 0.6-in / 17.39-m

Platform Capacity

Restricted: 750-lb / 340-kg
Unrestricted: 550-lb / 249-kg

KEY FEATURES

- Utilizes a single drive steering joystick for one-handed operation.
- The 600 Crawler Series delivers maximum-mobility for your toughest jobs and terrains.
- This-machine has zero turning radius to get around the job site easier.
- Complies with A92.20 ANSI regulations, achieving the highest standards.

ACCESSORIES & OPTIONS

- 1/2-in Airline to Platform
- AC Generator, 2500W or 4000W
- Accessory Packages:
 - SkyGlazier® Package
 - SkyPower® Package
 - SkyWelder® Package
- Arctic Package¹
- Cold Weather Start Package²
- Light Package
- Platform Mesh to Mid or Top Rail
 - Aluminum or Plastic
- Platforms
 - Drop Bar, 30 x 36-in, 30 x 48-in, 30 x 72-in, 36 x 72-in, 36 x 96-in
 - Fall Arrest, Rear Entry, 36 x 72-in, 36 x 96-in
 - Inward Self-Closing Swing Gate, 30 x 48-in, 30 x 60-in, 36 x 72-in, 36 x 96-in
 - Tri-Entry, Drop Bar or Swing Gate, 36 x 72-in, 36 x 96-in
- SkySense® Enhanced Detection System
- Storage Tray - Center or Corner

STANDARD SPECIFICATIONS

Performance

| | |
|----------------------------------|-----------------------------------|
| Platform Height | 65-ft 7-in / 19.99-m |
| Horizontal Outreach | 57-ft 0.6-in / 17.39-m |
| Swing | 360 Degrees Continuous |
| Platform Capacity (Restricted) | 750-lb / 340-kg |
| Platform Capacity (Unrestricted) | 550-lb / 249-kg |
| Platform Rotator | 180 Degrees Hydraulic |
| Jib Range of Articulation | 132 Degrees (+71, -61) |
| Weight* | 27,620-lb / 12,528-kg |
| Max. Ground Bearing Pressure | 11.3 psi / 0.8 kg/cm ² |
| Drive Speed | 1.6-mph / 2.6 km/h |
| Gradeability | 55% |
| Turning Radius | Zero |
| Type of Tracks | Steel |
| Tracks Width | 20-in / .51-m |

Engine

| | |
|--|----------------|
| Diesel Fuel – Deutz TD2.9L4 Tier 4 Final | 67 hp / 50 kW |
| Fuel Tank Capacity | 31 gal / 117 L |
| Auxiliary Power | 12V DC |

Tracks

| | |
|----------|--|
| Optional | Rubber Tracks Steel Tracks with Rubber Pads |
|----------|--|

Hydraulic System

| | |
|----------|----------------|
| Capacity | 34 gal / 129 L |
|----------|----------------|

STANDARD FEATURES

- 5 Degree Tilt Alarm/Indicator Light
- 12V-DC Auxiliary Power
- 110V-AC Receptacle in the Platform
- All Motion Alarm
- Articulating Jib
- ClearSky Smart Fleet™ Hardware (CS550)**
- Control ADE® System
- Engine Distress Shutdown – Selectable via Analyzer
- Engine Distress Warning
- Gull-Wing Hoods
- Hourmeter
- Hydrostatic Drive
- LED Motion/Amber Beacon (CS550)**
- Lifting/Tie Down Lugs
- Load Sensing System
- Oscillating Axle
- Platform Console Machine
- Proportional Controls
- SkyGuard SkyLine™
- Platform Console Machine Status Light Panel***
- Swing-Out Engine Tray

*Certain Options or Country Standards Increase Weight.

**Standard Beacon and ClearSky Smart Fleet Hardware Availability Varies by Model Throughout 2023.

***Provides Indicator Lights at Platform Control Console for System Distress, Low Fuel, Degree Tilt Light and Foot Switch Status.

- Includes arctic hydraulic hoses (drive and steer only) and main boom cable, arctic hydraulic oil, extreme cold engine oil, fuel conditioner, engine block heater, battery blanket, glow plugs, hydraulic tank heater, and oversized footswitch.
- Includes battery blanket, hydraulic tank heater, block heater.

Note: Some options may increase lead time, and some option combinations may not be available.

Additional accessories and options available via JLG Aftermarket.



866 874-0584 AERIALTITANS.COM

660SJC

TELESCOPIC CRAWLER BOOM LIFT

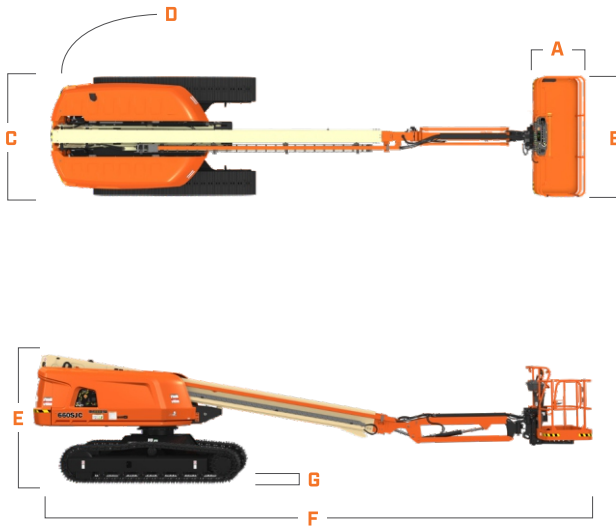
BOOM LIFT



AERIAL TITANS

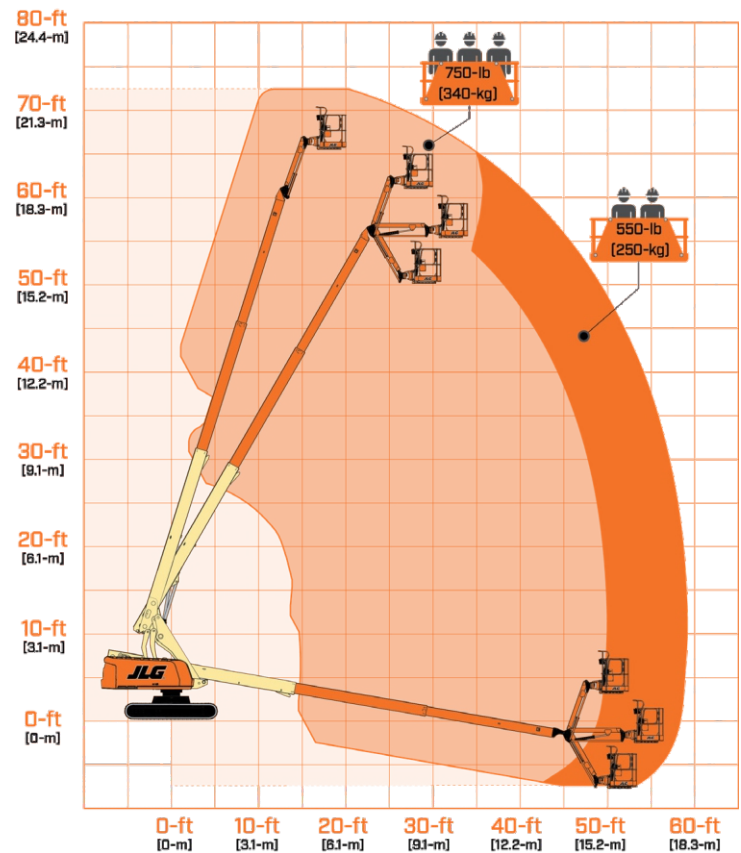
DIMENSIONS

All dimensions are approximate



- A. Platform Width 36-in / 91-cm
- B. Platform Length 96-in / 2.44-m
- C. Machine Width 8-ft 2-in / 2.49-m
- D. Tailswing 4-ft / 1.22-m
- E. Machine Height 8-ft 1.2-in / 2.47-m
- F. Machine Length 35-ft 4.7-in / 10.79-m
- G. Ground Clearance 15-in / 38-cm

REACH DIAGRAM



AERIAL TITANS

866 874-0584 AERIALTITANS.COM



We provide coverage for one (1) full year, and cover all specified-major structural components for five (5) years. Due to continuous product improvements, we reserve the right to make specification and/or equipment changes without prior notification. This-machine-meets or exceeds applicable ANSI and CSA requirements based on-machine configuration as originally-manufactured for intended applications. Please reference the serial number plate on the-machine for additional information.



JLG INDUSTRIES, INC.
Toll-free US 877-JLG-LIFT
JLG.com

An Oshkosh Corporation Company