

AERIAL TITANS



KEY FEATURES

- Improved load chart working zone at max lift capacity and max forward reach.
- Advanced control system that enables options such as Load Stability Indication (LSI), Seatbelt Engagement and Operator Presence (SEAOP), multifunction display with backup camera and electronic load charts, and improved diagnostics.
- Deutz 2.2L 60 hp diesel engine provides optimized machine performance and improves fuel efficiency.
- Electric over hydraulic joystick offers greater multifunction capability including auxiliary hydraulic function and attachment tilt.
- Standard LED Motion/Amber Beacon with ClearSky Smart Fleet™ Connectivity Hardware

ACCESSORIES & OPTIONS

- Air Conditioning
- Battery Disconnect Switch
- Boom Prop
- Brick Guard Package
- Enclosed Cab with Heat
- Fenders
- Fixed Drawbar/Drop Pin Hitch
- Hydraulic Universal Skid Steer Coupler
- LED Worklight Package
- LSI
- Mechanical Universal Skid Steer Coupler
- Multifunction Display with Reversing Camera & Electronic Load Charts
- Reverse Sensing
- Road Light Package
- Seatbelt Engagement & Operator Presence
- Skylight/Rear Wiper Package
- Tilt Steering (open cab)
- White Noise Backup Alarm

ATTACHMENTS

Standard Carriage	48-in	1.2-m
Side-Tilt Carriage	48-in	1.2-m
Side Shifting Carriage	48-in	1.2-m
Dual Fork Positioning Carriage	48-in	1.2-m
Pallet Forks	2-in x 4-in x 48-in	51-mm x 102-mm x 1.2-m
General Purpose Bucket	73-in, 1.0-cu yd	1.8-m, 0.76-m ³
Light Material Bucket	72-in, 1.7-cu yd	1.8-m, 1.29-m ³
Grapple Bucket	72-in, 1.0-cu yd	1.8-m, 0.76-m ³
Lifting Hook		
Fork-Mounted Work Platform		
Universal Skid Steer Adapter		

STANDARD SPECIFICATIONS

Performance

Rated Capacity	5,500-lb / 2,495-kg
Maximum Lift Height	18-ft 7-in / 5.7-m
Load at Max Height	4,400-lb / 1,996-kg
Maximum Forward Reach	10-ft 10-in / 3.3-m
Load at Max Reach	1,900-lb / 862-kg
Lift Speed (Boom Retracted) Up	7.2 sec
Lift Speed (Boom Retracted) Down	5.6 sec
Boom Speed Extended	7.2 sec
Boom Speed Retracted	5.0 sec
Top Travel Speed (4-Speed)	15 mph / 24.1 km/h
Drawbar Pull (Loaded)	10,300-lb-ft / 46.7-kN
Outside Turning Radius	126-in / 3.2-m
Operating Weight	10,400-lb / 4,717-kg

Engine

Make and Model	Deutz TD2.2 L3
No. of Cylinders	3
Displacement	134 cu in / 2.2 L
Gross Power Basic	60 hp / 44.5 kW
Maximum Torque @ 1600 rpm	151-lb-ft / 205 Nm
Fuel Tank Capacity	18.5 gal / 69.3 L

Transmission

Hydrostatic

Axles

High bias limited slip differential on front axle.
Planetary on front and rear axles.

Brakes

Service brakes are inboard wet disc brake on front axle.
Parking brakes are wet disc spring-applied hydraulic release.

Tires

Standard	12 x 16.5 Pneumatic
Optional	12 x 16.5 Foam-Filled 33 x 12-20 Solid Non-Marking 33 x 16 Turf

Cab

- Adjustable suspension seat
- Certified ROPS/FOPS structure
- Horn
- High Visibility Orange Seatbelt
- Integrated Arm Rest
- Single Joystick Proportional Controls
- Rear View Mirrors

Steering 4-Wheel

Operator selectable 4-wheel circle, 4-wheel crab, 2-wheel front.

Instruments & Standard Features

- Auxiliary Hydraulics & Carriage Tilt on Joystick
- Backup Alarm
- Continuous Auxiliary Hydraulics
- Engine Heater
- Fuel Gauge
- Glow Plugs
- Hourmeter
- Inching
- LCD Display for diagnostics
- Lifting Lug
- Framer/Loader Switch
- JLG Mechanical Coupler
- Temperature Gauge
- Speedometer
- Tachometer

Hydraulic System-Implement

Capacity	18 gal / 68 L
Max. Auxiliary Flow to the Boom Head	18 GPM

- Single-section gear pump.
- Auxiliary hydraulics used for all attachments equipped with cylinders or other hydraulic components.

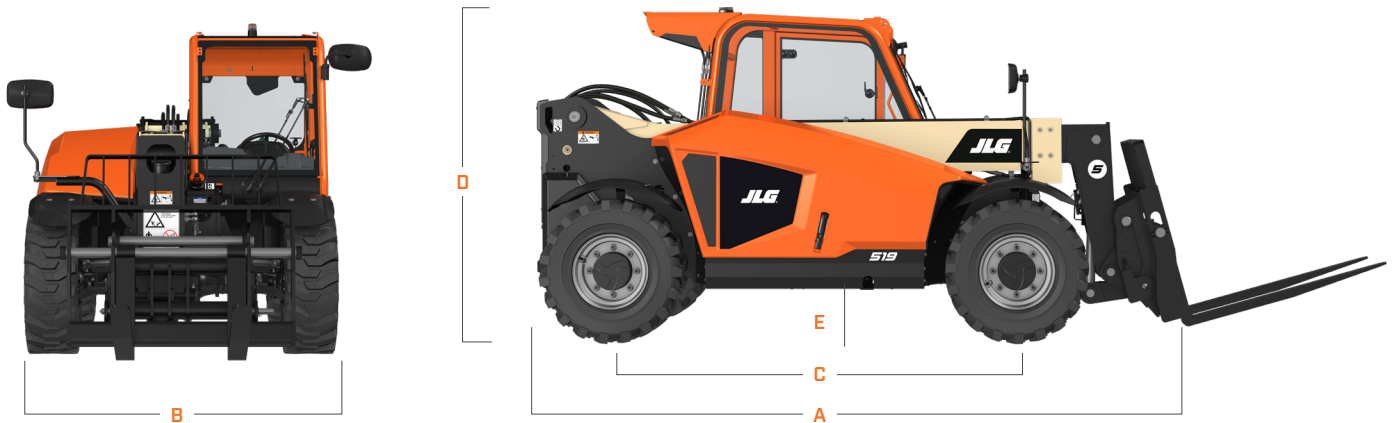
DIMENSIONS

AERIAL TITANS

All dimensions are approximate

Dimensions

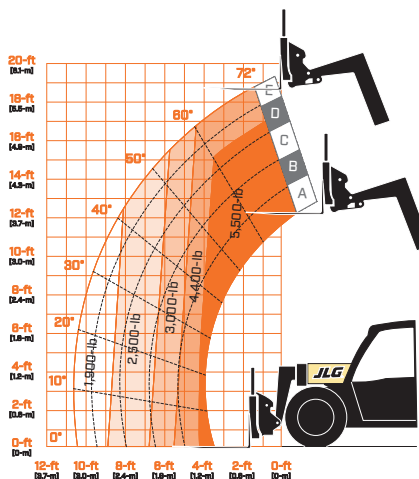
All dimensions are approximate.



- A. Machine Length 151.5-in / 3850-mm
- B. Machine Width 72-in / 1830-mm
- C. Wheelbase 92.5-in / 2350-mm

- D. Machine Height 76-in / 1928-mm
- E. Ground Clearance 10.8-in / 274-mm

LOAD CHART



AERIAL TITANS

866 874-0584 AERIALTITANS.COM



We provide coverage for one (1) full year on the entire machine, two (2) full years or 2,000 hours on the drivetrain and cover all specified major structural components for five (5) years. Due to continuous product improvements, we reserve the right to make specification and/or equipment changes without prior notification.



JLG INDUSTRIES, INC.
Toll-free US 877-JLG-LIFT
JLG.com

An Oshkosh Corporation Company