

# 460SJ

TELESCOPIC BOOM LIFT

BOOM LIFT



## AERIAL TITANS



### KEY SPECS

**Platform Height**  
46-ft / 14.05-m

**Horizontal Outreach**  
39-ft / 12-m

**Drive Speed**  
4.25 mph / 6.8 km/h

**Platform Capacity**  
600-lb / 272-kg

### KEY FEATURES

- Delivers improved multifunction capability for increased productivity.
- Utilizes a new hood design to provide more durability and serviceability.
- Features a 600-lb platform capacity to take everything needed to the job site.
- Maximize horizontal reach with a straight boom.

### ACCESSORIES & OPTIONS

- 1/2-in Air Line to Platform
- AC Generator, 2500W or 4000W
- Accessory Packages
  - SkyPower® Package
  - SkyWelder® Package
  - SkyGlazier® Package
- Arctic Package<sup>1</sup>
- Bolt On Fall Arrest System
- Cold Weather Package<sup>2</sup>
- Hostile Environment Package<sup>3</sup>
- Light Package
- Platform Mesh to Mid or Top Rail
- Aluminum or Plastic Platforms
  - Drop Bar, 30 x 36-in, 30 x 60-in, 36 x 72-in, 36 x 96-in
  - Fall Arrest, Rear Entry, 36 x 72-in, 36 x 96-in
  - Inward Self-Closing Swing Gate, 30 x 60-in, 36 x 72-in, 36 x 96-in
- Tri-Entry, Drop Bar or Swing Gate, 36 x 72-in, 36 x 96-in
- SkySense® Enhanced Detection System
- Soft Touch System
- Storage Tray - Center or Corner

### STANDARD SPECIFICATIONS

#### Performance

|                                  |   |
|----------------------------------|---|
| Platform Height                  | 46-ft / 14.05-m                             |
| Horizontal Outreach              | 39-ft / 12-m                                |
| Swing                            | 360 Degrees Continuous                      |
| Platform Capacity (Unrestricted) | 600-lb / 272-kg                             |
| Platform Rotator                 | 180 Degrees Hydraulic                       |
| Jib                              | 6-ft / 1.83-m                               |
| Range of Articulation            | 130 Degrees (+70, -60)                      |
| Weight*                          | 16,600-lb / 7,530-kg                        |
| Max. Ground Bearing Pressure     | 60 psi / 4.76 kg/cm <sup>2</sup>            |
| Drive Speed                      | 4.25 mph / 6.8 km/h                         |
| Gradeability                     | 45%   |
| Tilt Cut Out                     | 5 Degrees                                   |
| Turning Radius (Inside/Outside)  | 6-ft 6.9-in (2.0-m) / 15-ft 10.5-in (4.8-m) |

#### Engine

|   |                 |
|---|-----------------|
| Dual Fuel – Kubota WG2503               | 61 hp / 45.5 kW |
| Diesel Fuel – Deutz D2.9L4 Tier 4 Final | 49 hp / 36.4 kW |
| Fuel Tank Capacity                      | 22 gal / 83.3 L |

#### Tires

|          |   |
|----------|---|
| Standard | Foam Filled, 12x16.5  |
| Optional | Foam Filled Non-Marking, 12x16.5<br>Foam Filled, 14x17.5<br>Foam Filled, Turf & Sand, 33/16Lx16.1 |

#### Hydraulic System

|                     |                   |
|---------------------|-------------------|
| Hydraulic Reservoir | 36 gal / 136.27 L |
| Auxiliary Power     | 12V DC            |

### STANDARD FEATURES

- 36 x 96-in (.91 x 2.44-m) Platform
- 5 Degree Tilt Alarm/Indicator Light
- 12V-DC Auxiliary Power
- 110V-AC Receptacle in the Platform
- 180 Degree Hydraulic Platform Rotator
- ClearSky Smart Fleet™ Hardware (CS550)\*\*
- Control ADE® System
- Four-Wheel Hydrostatic Drive
- Glow Plugs (Diesel Engines)
- Horn
- Hourmeter
- Improved Multi-Function Controls
- Interactive Display at Ground Controls
- Lifting/Tie Down Lugs
- LED Motion / Amber Beacon (CS550)\*\*
- Motion Alarm
- Oscillating Axle
- Platform Console Machine Status Light Panel\*\*\*
- Proportional Controls
- Reduced Time to Full Height
- SkyGuard SkyLine™
- Swing-Out Engine Tray

\*Certain Options or Country Standards Increase Weight.

\*\*Standard Beacon and ClearSky Smart Fleet Hardware Availability Varies by Model Throughout 2023.

\*\*\*Provides Indicator Lights at Platform Control Console for System Distress, Low Fuel, Degree Tilt Light and Foot Switch Status.

- Includes arctic hydraulic hoses (drive and steer only) and main boom cable, arctic hydraulic oil, extreme cold engine oil, fuel conditioner, engine block heater, battery blanket, glow plugs, hydraulic tank heater, and oversized footswitch.
- Includes battery blanket, hydraulic tank heater, block heater.
- Includes console cover, boom wipers and cylinder bellows.

Note: Some options may increase lead time, and some option combinations may not be available. Additional accessories and options available via JLG Aftermarket.

# 460SJ

TELESCOPIC BOOM LIFT

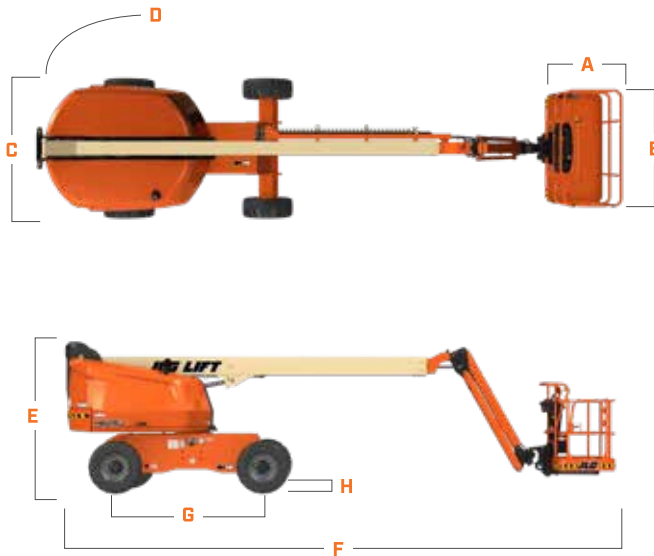
BOOM LIFT



## AERIAL TITANS

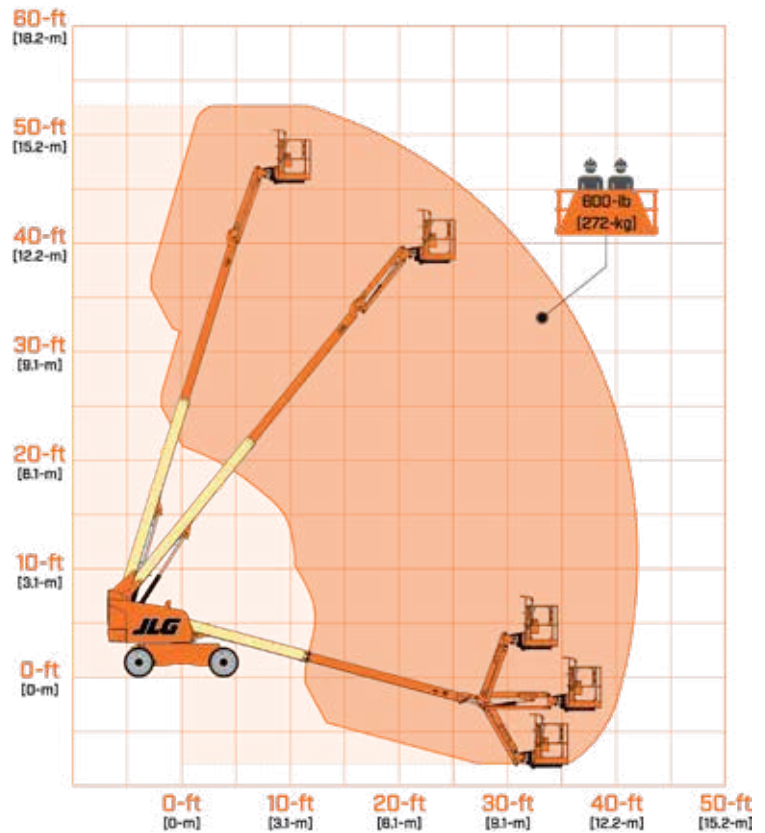
### DIMENSIONS

All dimensions are approximate



- A. Platform Width 36-in / 0.91-m
- B. Platform Length 96-in / 2.44-m
- C. Machine Width 7-ft 6.8-in / 2.31-m
- D. Tailswing 2-ft 10-in / 86-cm
- E. Machine Height 8-ft 1-in / 2.47-m
- F. Machine Length 24-ft 11-in / 7.6-m
- G. Wheelbase 7-ft 9.5-in / 2.37-m
- H. Ground Clearance 12.1-in / 31-cm

### REACH DIAGRAM



## AERIAL TITANS

866 874-0584 AERIALTITANS.COM



We provide coverage for one (1) full year, and cover all specified major structural components for five (5) years. Due to continuous product improvements, we reserve the right to make specification and/or equipment changes without prior notification. This machine meets or exceeds applicable ANSI and CSA requirements based on machine configuration as originally manufactured for intended applications. Please reference the serial number plate on the machine for additional information.

Part No. 3131046 | R0823\_01



JLG INDUSTRIES, INC.  
Toll-free US 877-JLG-LIFT  
JLG.com

An Oshkosh Corporation Company