



## Performance

Rated Capacity	16,755 lb	7,600 kg
Maximum Lift Height	31 ft. 8 in.	9.65 m
Load at Max Height	9,900 lb	4,491 kg
Maximum Forward Reach	18 ft 7 in.	5.66 m
Load at Max Reach	5,500 lb	2,495 kg
Frame Leveling	8 degrees	
Lift Speed (boom retracted)		
Up	14.1 sec	
Down	10.9 sec	
Boom Speed		
Extended	13.2 sec	
Retracted	10.9 sec	
Top Travel Speed	20 mph	32 kph
Drawbar Pull (loaded)	23,000 lb	102 kN
Outside Turning Radius	13 ft 2 in.	4.01 m
Operating Weight	31,145 lb	14,127 kg

## Standard Specifications

### Engine

Make and Model	Deutz TCD 3.6L	
No. of Cylinders	4	
Displacement	220 cu in.	3.6 L
Gross Basic Power	134 hp	100 kW
Maximum Torque @ 2200 rpm	369 lb-ft	500 Nm
Fuel Tank Capacity	39 gal.	148 L

### Transmission

Hydrostatic 2-speed

### Axles

Trunnion mounted planetary 45 degree steer axles.  
Integral steer cylinder.  
High bias limited slip differential on front axle.

### Brakes

Service brakes are inboard wet disc brake on front and rear axles and include inching.  
Parking brakes are wet disc spring applied hydraulic release on front axle.

### Tires

Standard	17.5-25 SGG
Optional	Foam-Filled

### Cab

- |  |   |  |
|--|---|--|
| <input type="checkbox"/> Certified ROPS/FOPS structure           | <input type="checkbox"/> Adjustable seat          | <input type="checkbox"/> Enclosed cab          |
| <input type="checkbox"/> Horn                                    | <input type="checkbox"/> Single joystick controls | <input type="checkbox"/> Tilt steering column  |
| <input type="checkbox"/> Tilt & auxiliary hydraulics on joystick | <input type="checkbox"/> Anti-theft               | <input type="checkbox"/> Retractable sunscreen |

### Steering 4-Wheel

Hydraulic power steering  
Operator selectable 4-wheel circle, 4-wheel crab, 2-wheel front

### Instruments

- |  |  |
|--|--|
| <input type="checkbox"/> Volt meter                | <input type="checkbox"/> Temperature gauge |
| <input type="checkbox"/> Hourmeter                 | <input type="checkbox"/> Fuel gauge        |
| <input type="checkbox"/> Engine oil pressure gauge | <input type="checkbox"/> DEF gauge         |

### Hydraulic System-Implement

Capacity	77 gal.	292 L
----------	---------	-------

Load sense piston pump. Auxiliary hydraulics used for all attachments equipped with cylinders or other hydraulic components.

## Accessories & Options

- |  |  |   |
|--|--|---|
| <input type="checkbox"/> Auxiliary Electrics | <input type="checkbox"/> Rotating Beacon           | <input type="checkbox"/> Arctic Package                               |
| <input type="checkbox"/> Hydraulic Coupler   | <input type="checkbox"/> Roof Wiper                | <input type="checkbox"/> Secondary Steering                           |
| <input type="checkbox"/> Road Lights         | <input type="checkbox"/> Reversing Fan             | <input type="checkbox"/> Boom Float                                   |
| <input type="checkbox"/> Fenders             | <input type="checkbox"/> Ride Control              | <input type="checkbox"/> Multi-Function Display with Reversing Camera |
| <input type="checkbox"/> Air Conditioning    | <input type="checkbox"/> Reverse Sensing System    | <input type="checkbox"/> White Noise Back-up Alarm                    |
| <input type="checkbox"/> Brick Guards        | <input type="checkbox"/> Boom Brushes              | <input type="checkbox"/> Multiple Seat Options                        |
| <input type="checkbox"/> Work Lights         | <input type="checkbox"/> Dual Auxiliary Hydraulics | <input type="checkbox"/> SmartLoad Technology                         |

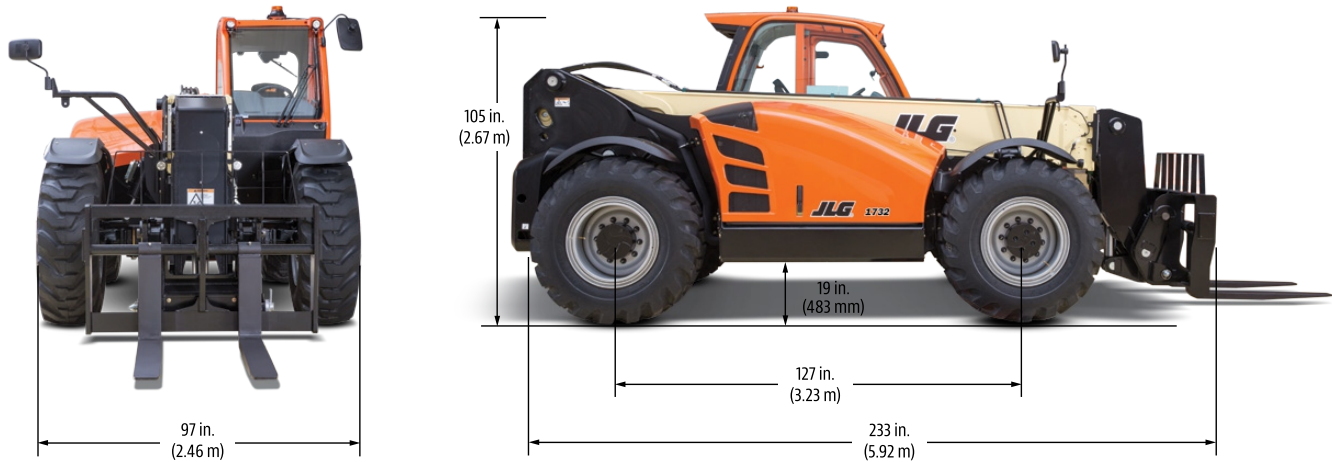
## Attachments

Standard Carriage	60 in.	15 m
	72 in.	1.8 m
	87 in.	2.2 m
Dual Fork Positioning Carriage	72 in.	1.8 m
Side-Shift Carriage with Dual Fork Positioning	72 in.	1.8 m
General Purpose Bucket	94 in., 2.6 cu yd	2.38 m, 1.98 m <sup>3</sup>
Light Material Bucket	94 in., 5.2 cu yd	2.38 m, 3.97 m <sup>3</sup>
Multipurpose 4-in-1 Bucket	94 in., 1.3 cu yd	2.38 m, 0.99 m <sup>3</sup>
Multipurpose 4-in-1 Bucket	94 in., 2.6 cu yd	2.38 m, 1.98 m <sup>3</sup>
Grapple Bucket	94 in., 1.7 cu yd	2.38 m, 1.29 m <sup>3</sup>
	94 in., 2.6 cu yd	2.38 m, 1.98 m <sup>3</sup>
Material Handling Arm	16,750 lb Capacity	7,598 kg
Hook, Coupler Mounted	16,750 lb Capacity	7,598 kg
Winch, Coupler Mounted	8,000 lb Capacity	3,629 kg
Bale Cradle, Round Bale	7,000 lb Capacity	3,175 kg
Bale Clamp, Square Bale	10,000 lb Capacity	4,536 kg
Pipe Grapple	96 in., 8,000 lb Capacity	2.4 m, 3,629 kg
Log Handler	80 in., 8,000 lb Capacity	2.03 m, 3,629 kg
Steel Coil Handler	16,750 lb Capacity	7,598 kg
Tire Handler	7,000 lb Capacity	3,175 kg

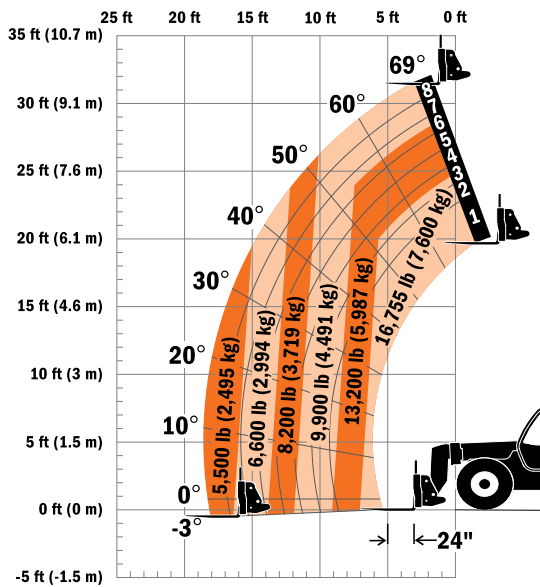
## AERIAL TITANS

### Dimensions

All dimensions are approximate.



### Load Chart



866 874-0584 AERIALTITANS.COM

### The JLG "1, 2 & 5" Warranty

We provide coverage for one (1) full year on the entire machine, two (2) full years or 2,000 hours on the drivetrain and cover all specified major structural components for five (5) years. Due to continuous product improvements, we reserve the right to make specification and/or equipment changes without prior notification.

Part No.: 3132248  
R04182  
Printed in USA



**JLG Industries, Inc.**  
1 JLG Drive  
McConnellsburg, PA 17233-9533  
Telephone 717-485-5161  
Toll-free in US 877-JLG-LIFT  
Fax 717-485-6417  
[www.jlg.com](http://www.jlg.com)

An Oshkosh Corporation Company