



Performance

Rated Capacity	15,650 lb	7,100 kg
Maximum Lift Height	43 ft 7 in.	13.28 m
Load at Max Height	6,750 lb	3,062 kg
Maximum Forward Reach	31 ft 1 in.	9.47 m
Load at Max Reach	2,000 lb	907 kg
Frame Leveling	8 degrees	
Lift Speed (boom retracted)		
Up	18.3 sec	
Down	13.6 sec	
Boom Speed		
Extended	15.8 sec	
Retracted	12.3 sec	
Top Travel Speed	20 mph	32 kph
Drawbar Pull (loaded)	23,000 lb	102 kN
Outside Turning Radius	13 ft 2 in.	4.01 m
Operating Weight	33,660 lb	15,265 kg

Standard Specifications

Engine

Make and Model	Deutz TCD 3.6L	
No. of Cylinders	4	
Displacement	220 cu in.	3.6 L
Gross Basic Power	134 hp	100 kW
Maximum Torque @ 2200 rpm	369 lb-ft	500 Nm
Fuel Tank Capacity	39 gal.	148 L

Transmission

Hydrostatic 2-speed

Axles

Trunnion mounted planetary 45 degree steer axles.
Integral steer cylinder.
High bias limited slip differential on front axle.

Brakes

Service brakes are inboard wet disc brake on front and rear axles and include inching.
Parking brakes are wet disc spring applied hydraulic release on front axle.

Tires

Standard	17.5-25 SGG
Optional	Foam-Filled

Cab

- Certified ROPS/FOPS structure
- Adjustable seat
- Enclosed cab
- Horn
- Single joystick controls
- Tilt steering column
- Tilt & auxiliary hydraulics on joystick
- Anti-theft
- Retractable sunscreen

Steering 4-Wheel

Hydraulic power steering
Operator selectable 4-wheel circle, 4-wheel crab, 2-wheel front

Instruments

- Volt meter
- Temperature gauge
- Hourmeter
- Fuel gauge
- Engine oil pressure gauge
- DEF gauge

Hydraulic System-Implement

Capacity	67 gal	255 L
----------	--------	-------

Load sense piston pump. Auxiliary hydraulics used for all attachments equipped with cylinders or other hydraulic components.

Accessories & Options

- Auxiliary Electrics
- Rotating Beacon
- Secondary Steering
- Hydraulic Coupler
- Roof Wiper
- Boom Float
- Road Lights
- Reversing Fan
- Multi-Function Display with Reversing Camera
- Fenders
- Ride Control
- White Noise Back-up Alarm
- Air Conditioning
- Reverse Sensing System
- Multiple Seat Options
- Brick Guards
- Boom Brushes
- SmartLoad Technology
- Work Lights
- Dual Auxiliary Hydraulics
- Positive Air Shut Off
- Arctic Package

Attachments

Standard Carriage	60 in.	1.5 m
	72 in.	1.8 m
	87 in.	2.2 m
Dual Fork Positioning Carriage	72 in.	1.8 m
Side-Shift Carriage		
with Dual Fork Positioning	72 in.	1.8 m
General Purpose Bucket	94 in., 2.6 cu yd	2.38 m, 1.98 m ³
Light Material Bucket	94 in., 5.2 cu yd	2.38 m, 3.97 m ³
Multipurpose 4-in-1 Bucket	94 in., 1.3 cu yd	2.38 m, 0.99 m ³
Grapple Bucket	94 in., 1.7 cu yd	2.38 m, 1.29 m ³
Material Handling Arm	16,750 lb Capacity	7,598 kg
Hook, Coupler-mounted	16,750 lb Capacity	7,598 kg
Winch, Coupler-mounted	8,000 lb	3,629 kg
Bale Cradle, Round Bale	7,000 lb Capacity	3,175 kg
Bale Clamp, Square Bale	10,000 lb Capacity	4,536 kg
Pipe Grapple	96 in., 8,000 lb Capacity	2.4 m, 3,629 kg
Log Handler	80 in., 8,000 lb Capacity	2.03 m, 3,629 kg
Steel Coil Handler	16,750 lb Capacity	7,598 kg
Lifting Hook, Fork-mounted	15,000 lb Capacity	6,804 kg
Extendable Truss, Fork-mounted	8,000 lb Capacity	3,629 kg

1644

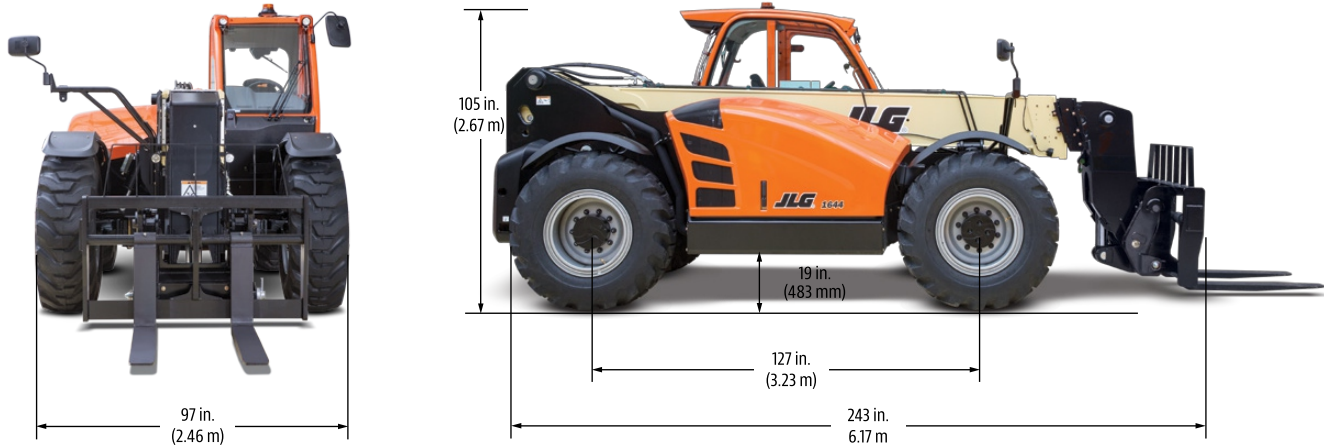
TELEHANDLER



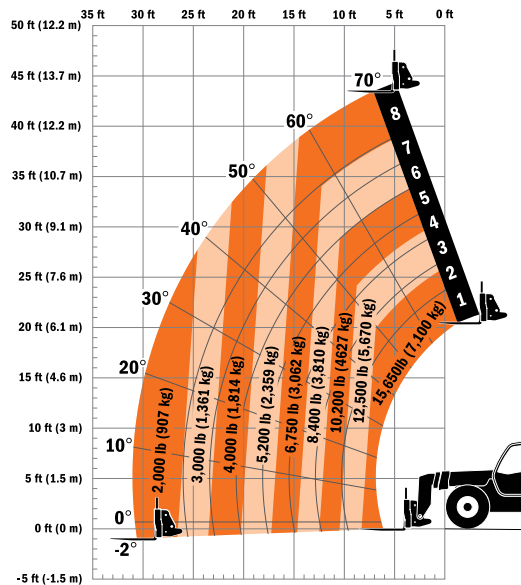
AERIAL TITANS

Dimensions

All dimensions are approximate.



Load Chart



866 874-0584 AERIALTITANS.COM

The JLG "1, 2 & 5" Warranty

We provide coverage for one (1) full year on the entire machine, two (2) full years or 2,000 hours on the drivetrain and cover all specified major structural components for five (5) years. Due to continuous product improvements, we reserve the right to make specification and/or equipment changes without prior notification.

Part No.: 3132249
R05182
Printed in USA



JLG Industries, Inc.
1 JLG Drive
McConnellsburg, PA 17233-9533
Telephone 717-485-5161
Toll-free in US 877-JLG-LIFT
Fax 717-485-6417
www.jlg.com

An Oshkosh Corporation Company