

## HA130 RTJ PRO



### OUTSTANDING ROUGH TERRAIN DRIVING CAPABILITIES

- > Differential wheel lock: 4 wheel drive and steer, oscillating axle
- > Up to 4 simultaneous, proportional movements
- > Tightest turning radius on the market
- > Continuous outreach control

### OPTIMIZED SERVICEABILITY

- > Modular platform, quick and easy to repair
- > Easy access to all components
- > Self-diagnosis integrated to the lower control box

### RELIABLE SAFETY

- > Haulotte Activ'Shield Bar 2.0



866 874-0584 AERIALTITANS.COM

# HA130 RTJ PRO

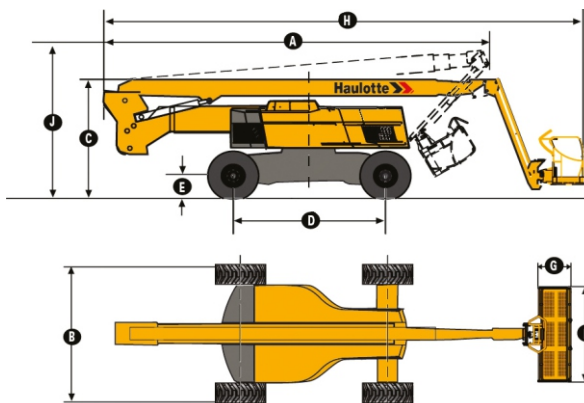
## AERIAL TITANS

ROUGH TERRAIN ARTICULATING BOOMS

### TECHNICAL DATA

#### HA130 RTJ PRO 4WD / 4WS

|  |                      |
|--|----------------------|
| Working height                         | 136 ft 2 in          |
| Platform height                        | 129 ft 7 in          |
| Horizontal outreach                    | 65 ft 11 in          |
| Up and over height                     | 57 ft 5 in           |
| Below ground reach                     | 4 ft 11 in           |
| Lift capacity                          | 500 lb (2 pers.)     |
| <b>F</b> x <b>G</b> Platform size      | 8 ft x 3 ft          |
| <b>H</b> Length                        | 43 ft                |
| <b>A</b> Length - transport            | 36 ft 1 in           |
| <b>B</b> Width                         | 8 ft 2 in            |
| Width - with extended axles            | 10 ft 10 in          |
| <b>C</b> Height - stowed               | 9 ft 10 in           |
| <b>J</b> Height - transport            | 12 ft 3 in           |
| Vertical jib rotation                  | 140° (+ 70° / - 70°) |
| Platform rotation                      | 180° (+ 90° / - 90°) |
| Turntable rotation                     | 360° continuous      |
| Tailswing                              | 12 ft 9 in           |
| <b>D</b> Wheelbase                     | 11 ft 6 in           |
| <b>E</b> Ground clearance              | 15 in                |
| Tilt alarm                             | 4 °                  |
| Maximum wind speed rating              | 28 mph               |
| Gradeability                           | 40 %                 |
| Outside turning radius - extended axle | 18 ft 10 in          |
| Tires                                  | 445 / 65 - 22.5      |
| Engine                                 | Deutz, 55 kW, Tier 4 |
| Weight                                 | 52,700 lb            |

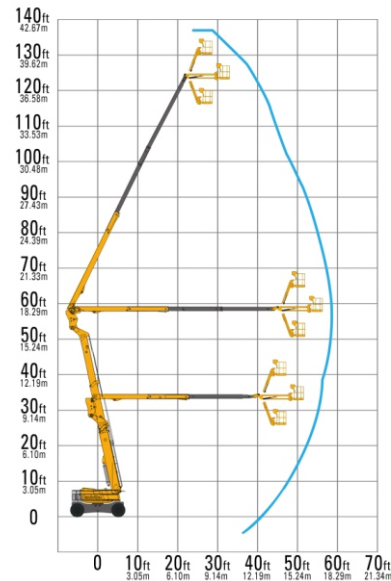


### STANDARD EQUIPMENT

- > Haulotte Activ'Shield Bar 2.0
- > Universal telematics plug
- > 4 wheel drive and 4 wheel steer
- > Front oscillating axle
- > 2 extendable axles
- > Fully proportional controls
- > 4 simultaneous movements
- > Differential wheel lock
- > Upper control box protection cover and tool tray in ultra-rugged composite
- > Modular large platform with swing door entry gate
- > Basket compensation  $\pm 10^\circ$
- > AC power to the platform
- > Swing out engine tray
- > Tilt / load alarm and light
- > Flashing beacon
- > Travel alarm
- > Electric pump system and emergency descent controls in upper control box
- > 12 V battery
- > Engine pre-heater with light indicator
- > Low fuel level indicator (upper control box)
- > Towing hooks
- > Hydrostatic transmission

### OPTIONS AND ACCESSORIES

- > Air line to platform
- > Lateral swing door entry gate (standard on US machines)
- > On-board hydraulic 3.7 kW generator
- > Biodegradable hydraulic oil
- > Hydraulic oil cooler
- > Cap with key for diesel tank
- > Hydraulic oil in tank and circuit for warm countries
- > Cold weather kit
- > Pipe cradle
- > Glazier kit
- > Automatic overspeed air shutdown valve (electric one-way valve, flame arrestor, spark arrestor)
- > 55W platform worklight



2420424910 - We reserve the right to modify the technical characteristics of this document without notice - 07/2019



866 874-0584 AERIALTITANS.COM