

## ROUGH TERRAIN ARTICULATING BOOMS

**AERIAL TITANS**

# HA100 RTJ PRO



### OUTSTANDING ROUGH TERRAIN DRIVING FEATURES

- > Unrestricted working envelope with maximum outreach
- > Oscillating axle
- > Differential wheel lock
- > 95 seconds to full height thanks to fully proportional controls and simultaneous boom functions

### OPTIMIZED SERVICEABILITY

- > Fully modular platform for quick and easy repairs
- > Easy access to all components
- > Self-diagnosis tool integrated to the lower control box

### RELIABLE AND SAFE

- > Optional Haulotte ActivShield Bar 2.0
- > Rigid boom construction

**AERIAL TITANS**

866 874-0584 AERIALTITANS.COM

# HA100 RTJ PRO

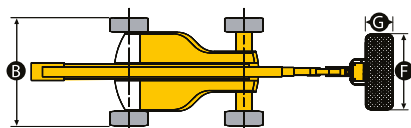
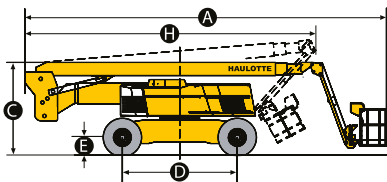
## AERIAL TITANS

### ROUGH TERRAIN ARTICULATING BOOMS

#### TECHNICAL DATA

##### HA100 RTJ PRO

Working height	103 ft 9 in
Platform height	97 ft 9 in
Horizontal outreach	70 ft 10 in
Up and over height	37 ft 3 in
Below ground reach	18 ft 1 in
Lift capacity	550 lb [2 pers.]
<b>F</b> x <b>G</b> Platform size	8 ft x 3 ft
<b>A</b> Length	38 ft 5 in
<b>B</b> Width	8 ft 4 in
<b>H</b> Transport length	29 ft 2 in
Transport height	12 ft 4 in
Width - with extended axles	10 ft 10 in
<b>C</b> Height - stowed	9 ft 2 in
Vertical jib rotation	140° (+ 70 / - 70)
Platform rotation	180° (+ 90 / - 90)
Turntable rotation	360° continuous
Tailswing	10 ft 10 in
<b>D</b> Wheelbase	11 ft 6 in
<b>E</b> Ground clearance	15 in
Tilt alarm	5°
Drive speed	0.3 - 3.1 mph
Maximum wind speed rating	37 mph
Gradeability	40 %
Tires	445 / 65-22.5
Outside turning radius - extended axle	18 ft 10 in
Engine	Deutz, 55 kW, Tier 4
Weight	44,321 lb

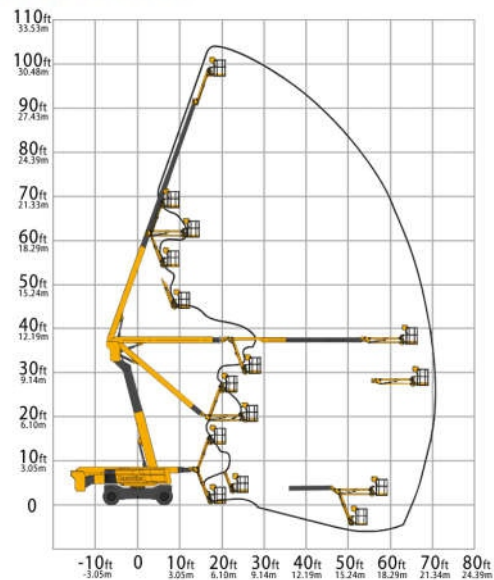


#### STANDARD EQUIPMENT

- > Haulotte ActivShield Bar 2.0
- > Universal telematics plug
- > 4 wheel drive and 4 wheel steer
- > Front oscillating axle
- > 2 extendable axles
- > Proportional controls
- > 4 simultaneous movements
- > Differential wheel lock
- > Upper control box protection cover and tool tray in plastic ultra-solid material
- > Standard modular large platform with swing door entry gate
- > AC power to the platform
- > Basket compensation  $\pm 10^\circ$
- > Swing out engine tray
- > Tilt / load alarm and light
- > Flashing beacon
- > Travel alarm
- > Hourmeter
- > Electric pump system and emergency descent
- > 12 V battery / electrical control system
- > Engine pre-heater with light indicator
- > Low fuel level indicator (upper control box)
- > Towing hooks

#### OPTIONS AND ACCESSORIES

- > Air line to platform
- > Lateral swing door entry gate (standard on US machines)
- > On-board hydraulic 3.5 kW generator
- > Biodegradable hydraulic oil
- > Hydraulic oil cooler
- > Hydraulic oil in tank and circuit for warm countries
- > Cap with key for diesel tank
- > Cold weather kit
- > Pipe cradle
- > Glazier pack
- > Automatic overspeed air shutdown valve (electric one-way valve, flame arrestor, spark arrestor)
- > 55 W platform worklight



866 874-0584 AERIALTITANS.COM